

8

7

6

5

4

3

2

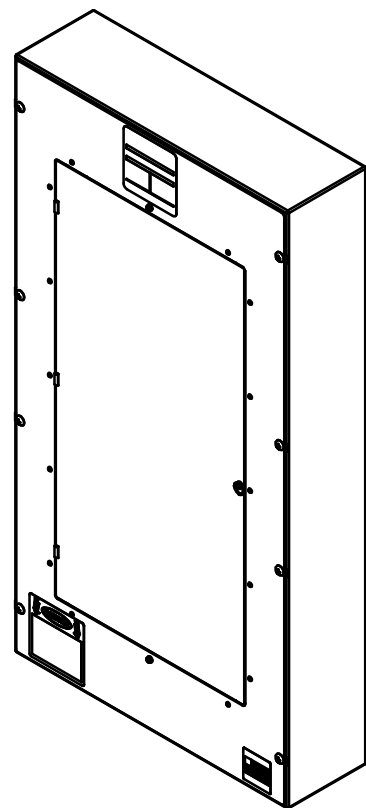
1

SPECIFICATIONS:

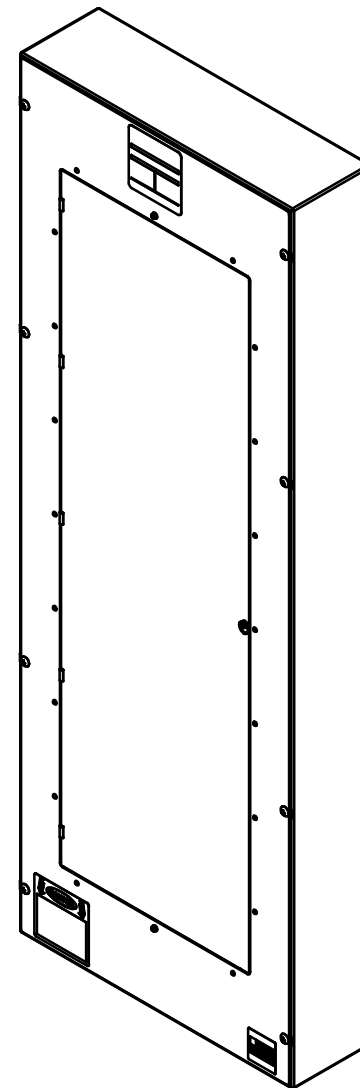
- A. DCP ASSEMBLY IS NRTL LISTED VIA CSA GROUP SPECIAL INDUSTRIAL CONTROL PANEL (SICP) SHOP PROGRAM. ASSEMBLY DESIGNED, MANUFACTURED, AND TESTED TO STANDARDS:
 - CSA C22.2 No.286-17
 - UL 508A
- B. ALL BREAKERS (MAIN FEEDER & DISTRIBUTION) ARE LISTED TO UL 489.
- C. 16 GA Steel ENCLOSURE Construction

PRODUCT SELECTION TABLE						
ITEM No.	HEIGHT (H)		MOUNTING (M)		# BRANCH BREAKERS	
	IN	MM	IN	MM	2-POLE	1-POLE
DCP38	38.00	965	32.00	813	12	24
DCP56	56.00	1423	50.00	1270	24	48

*CONSULT FACTORY FOR PRODUCT ITEM AVAILABILITY



DCP38



DCP56

NOTES:

1. ALL WIRING SHOULD CONFORM TO NEC, LOCAL, AND SITE REGULATIONS. ONLY USE COPPER (CU) CONDUCTORS.
2. UP TO THREE (3) MAIN BREAKERS AVAILABLE, 250VDC, 50-250ADC. SUM OF THREE (3) MAIN BREAKERS NOT TO EXCEED 400A.
 - a. "Hx" FRAME: COMPRESSION TERMINALS WILL ACCOMMODATE Cu-AI WIRE SIZES FROM #14 TO 3/0 AWG (50A, 75A, 100A, 125A, AND 150A TRIP RATINGS AVAILABLE).
 - b. "Jx" FRAME: COMPRESSION TERMINALS WILL ACCOMMODATE Cu-AI WIRE SIZES FROM 3/0 TO 350kcmil (150A, 175A, 200A, 225A, AND 250A TRIP RATINGS AVAILABLE).
3. BRANCH BREAKERS ARE SQUARE-D B-FRAME POWERPACT SERIES WITH COMPRESSION LUGS ACCEPTING #14 TO 3/0 AWG. BREAKERS ARE RATED FOR 250VDC @ 15-125ADC.
4. GROUND COMPRESSION LUG TERMINAL WILL ACCEPT Cu-AI WIRES FROM #14 TO 1/0 AWG.
5. SINGE POLE BRANCH BREAKERS AVAILABLE (CONTACT FACTORY FOR CONFIGURATIONS).



C US
SICP (SPEC A)

REV. 4	DRN BY MS	CHK BY SW	APP BY SW	DATE 7/14/2022	DRN BY MS	DATE: 12/17/2021		
DESCRIPTION				EXPANDED DOCUMENT TO SHOW EACH SERIES SPECIFICALLY	CHK BY SW	DATE: 12/17/2021		
PROPRIETARY AND CONFIDENTIAL NOTICE				ANY REPRODUCTION, PARTIAL OR AS A WHOLE OF THIS DOCUMENT WITHOUT THE WRITTEN PERMISSION OF HINDLE POWER, INC IS STRICTLY PROHIBITED.	APP BY MD	DATE: 12/17/2021	TITLE	
					UNLESS OTHERWISE SPECIFIED ALL DIMENSIONS FOLLOW THE ANSI SYSTEM IPS (INCHES-POUNDS & SECONDS) TOLERANCES ARE: FRAC. ±1/64, DEC. ±.015, ANG ±.25°		DC CONTROL PANEL	
					SCALE	DWG No	REV	SHEET
					B	1:10	4	1 OF 4
					JE5368-00			

8

7

6

5

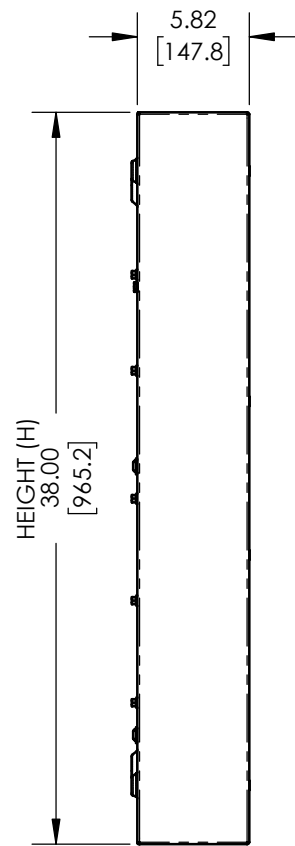
4

3

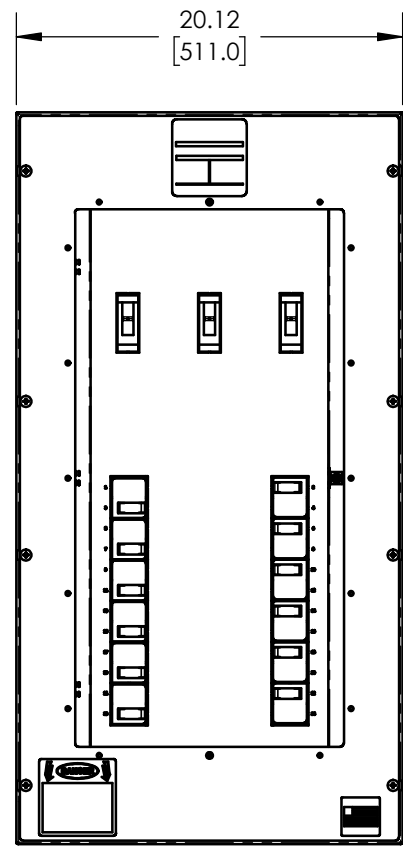
2

1

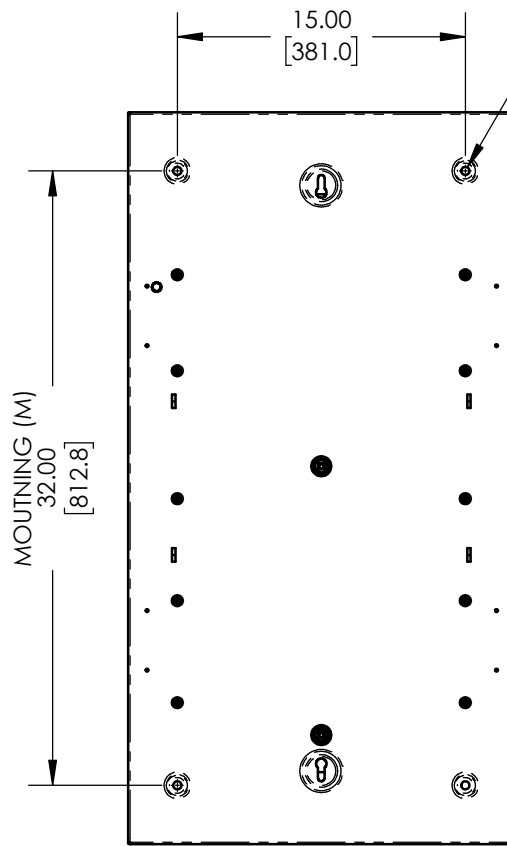
DCP38



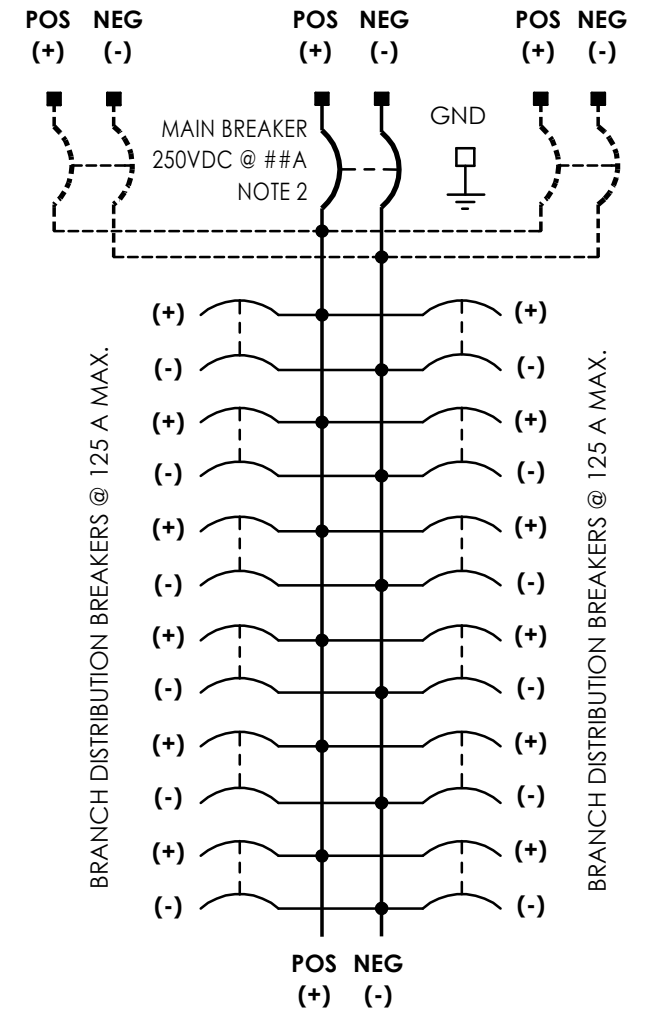
LEFT SIDE VIEW



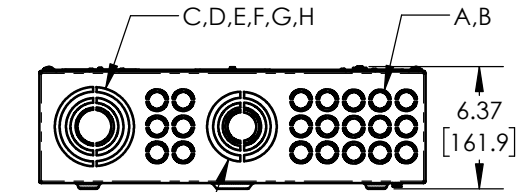
FRONT VIEW



REAR VIEW



DC CONTROL PANEL SCHEMATIC



BOTTOM VIEW

KNOCKOUT TABLE

SYMBOL	CONDUIT SIZE		KNOCKOUT SIZE	
	IN	MM	IN	MM
A	0.50	13	0.88	22
B	0.75	19	1.12	28
C	1.25	32	1.75	44
D	1.50	38	2.00	51
E	2.00	51	2.50	64
F	2.50	64	3.00	76
G	3.00	76	3.62	92
H	3.50	89	4.12	105

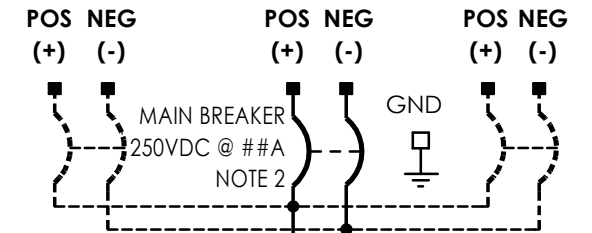
REV. 4	DRN BY MS	CHK BY SW	APP BY SW	DATE 7/14/2022	DRN BY MS	DATE: 12/17/2021
DESCRIPTION				EXPANDED DOCUMENT TO SHOW EACH SERIES SPECIFICALLY	CHK BY SW	DATE: 12/17/2021
PROPRIETARY AND CONFIDENTIAL NOTICE				ANY REPRODUCTION, PARTIAL OR AS A WHOLE OF THIS DOCUMENT WITHOUT THE WRITTEN PERMISSION OF HINDLE POWER, INC IS STRICTLY PROHIBITED.	APP BY MD	DATE: 12/17/2021
UNLESS OTHERWISE SPECIFIED ALL DIMENSIONS FOLLOW THE ANSI SYSTEM IPS (INCHES-POUNDS & SECONDS) TOLERANCES ARE: FRAC. ±1/64, DEC. ±0.015, ANG ±25°				TITLE		



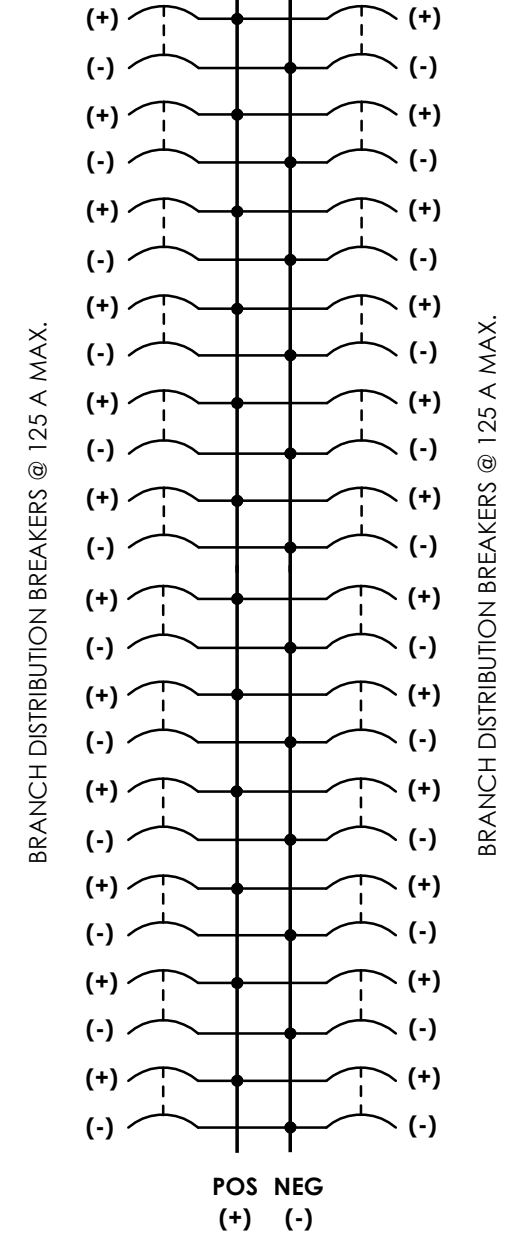
DC CONTROL PANEL

SCALE 1:10	DWG No JE5368-00	REV 4	SHEET 2 OF 4
------------	------------------	-------	--------------

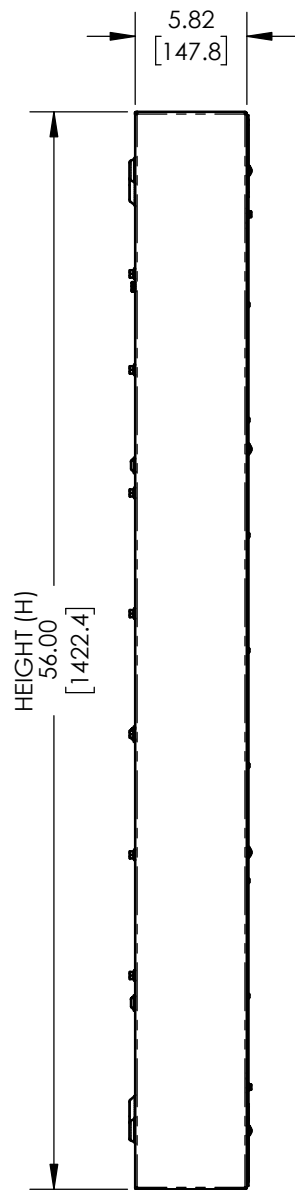
DCP56



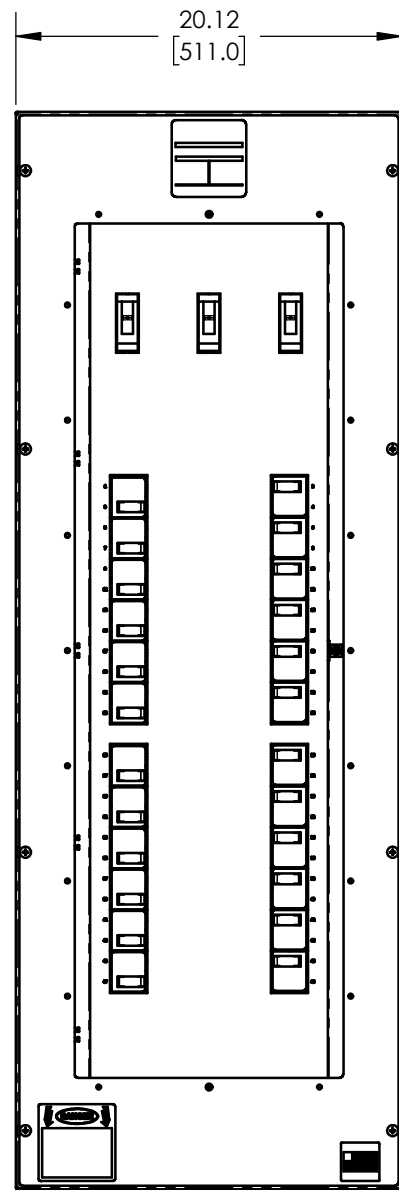
4X Ø 0.42
[10.7]
(FOR 3/8" SCREWS)



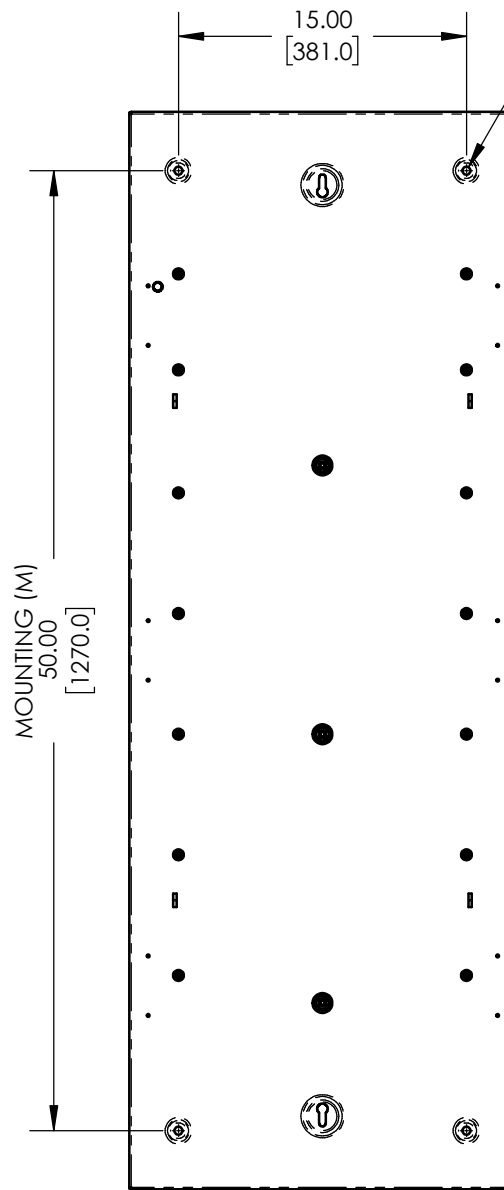
DC CONTROL PANEL SCHEMATIC



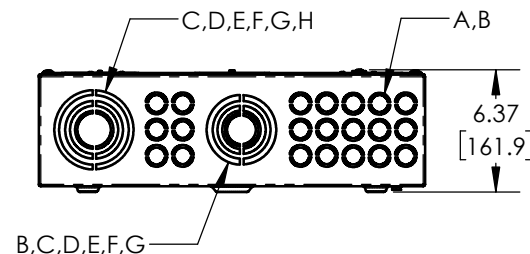
LEFT SIDE VIEW



FRONT VIEW



REAR VIEW



BOTTOM VIEW

KNOCKOUT TABLE

SYMBOL	CONDUIT SIZE		KNOCKOUT SIZE	
	IN	MM	IN	MM
A	0.50	13	0.88	22
B	0.75	19	1.12	28
C	1.25	32	1.75	44
D	1.50	38	2.00	51
E	2.00	51	2.50	64
F	2.50	64	3.00	76
G	3.00	76	3.62	92
H	3.50	89	4.12	105

REV. 4	DRN BY MS	CHK BY SW	APP BY SW	DATE 7/14/2022	DRN BY MS	DATE 12/17/2021
DESCRIPTION				EXPANDED DOCUMENT TO SHOW EACH SERIES SPECIFICALLY	CHK BY SW	DATE 12/17/2021
PROPRIETARY AND CONFIDENTIAL NOTICE				ANY REPRODUCTION, PARTIAL OR AS A WHOLE OF THIS DOCUMENT WITHOUT THE WRITTEN PERMISSION OF HINDLE POWER, INC IS STRICTLY PROHIBITED.	APP BY MD	DATE 12/17/2021
UNLESS OTHERWISE SPECIFIED ALL DIMENSIONS FOLLOW THE ANSI SYSTEM IPS (INCHES-POUNDS & SECONDS) TOLERANCES ARE: FRAC. ±1/64, DEC. ±0.015, ANG ±25°				TITLE		
DC CONTROL PANEL				SCALE	DWG No	REV
B				1:10	JE5368-00	4
				SHEET	3 OF 4	



DC CONTROL PANEL

SCALE 1:10 DWG No JE5368-00 REV 4 SHEET 3 OF 4

8

7

6

5

4

3

2

1

DC CONTROL PANEL ORDERING CODE

A	B	C	D	E	F	G	H	J	K	L	M	N	P	Q	R
DCP	38	200	100	XXX	A	2	A	X	X	X	X	B	R	G	1
SERIES	BOX HEIGHT	CENTER MAIN CIRCUIT BREAKER	RIGHT CIRCUIT BREAKER	LEFT CIRCUIT BREAKER	MAIN BREAKER AUX CONTACTS	BRANCH BREAKER TYPE	BRANCH BREAKER AUX CONTACTS	FUTURE/UNUSED	FUTURE/UNUSED	FUTURE/UNUSED	FUTURE/UNUSED	FUTURE/UNUSED	ENCLOSURE MOUNTING	GROUNDING	NEMA TYPE ENCLOSURE

B - BOX HEIGHT

OPTION CODE	ENCLOSURE	"H"	QTY. 2-POLE BREAKERS
38	MH38	38in	1-12
56	MH56	56in	13-24

Q - GROUNDING

- X - STANDARD CU-AL COMPRESSION LUG
- G - OPTIONAL GROUND BUS BAR

C - CENTER MAIN BREAKER (OPTIONAL)

- 100 - 100A HD2 DC BREAKER (20 kAIC)
- 200 - 200A JD2 DC BREAKER (20 kAIC)
- ### - SPECIAL "HD2" FRAME TRIP RATING (20 kAIC, 050A THRU 150A)
- ### - SPECIAL "JD2" FRAME TRIP RATING (20 kAIC, 175A THRU 250A)
- LUG - CU-AL COMPRESSION LUGS (DIRECT CONNECTION TO DC BUS)

D - RIGHT CIRCUIT BREAKER (OPTIONAL)

- XXX - NOT SUPPLIED
- 100 - 100A HD2 DC BREAKER (20 kAIC)
- 200 - 200A JD2 DC BREAKER (20 kAIC)
- ### - SPECIAL "HD2" FRAME TRIP RATING (20 kAIC, 050A THRU 150A)
- ### - SPECIAL "JD2" FRAME TRIP RATING (20 kAIC, 175A THRU 250A)

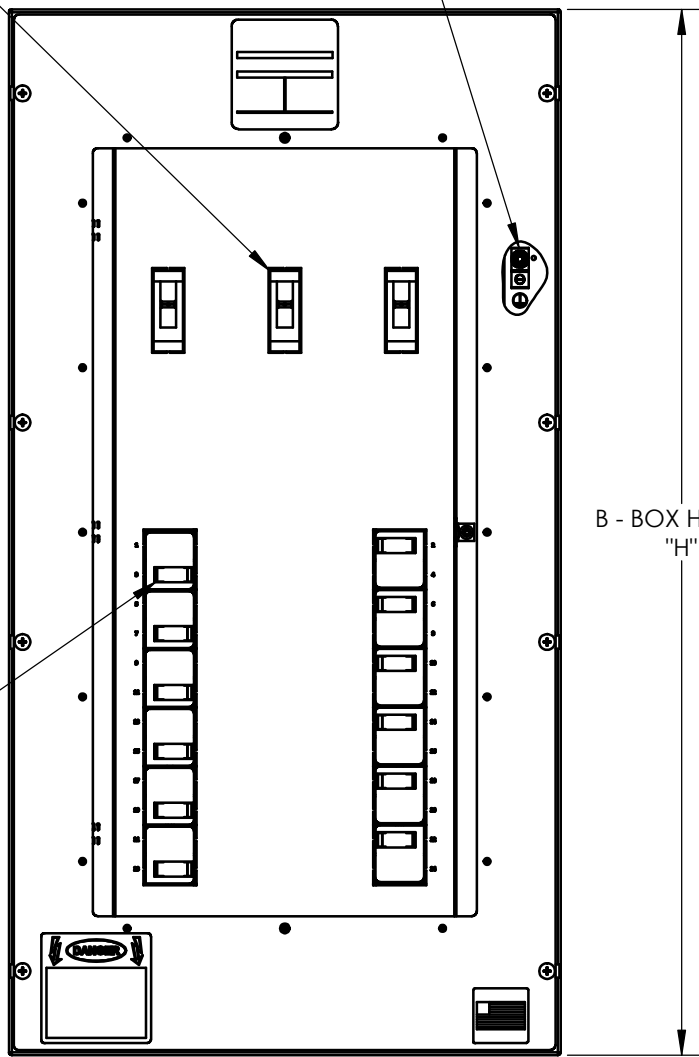
E - LEFT CIRCUIT BREAKER (OPTIONAL)

- XXX - NOT SUPPLIED
- 100 - 100A HD2 DC BREAKER (20 kAIC)
- 200 - 200A JD2 DC BREAKER (20 kAIC)
- ### - SPECIAL "HD2" FRAME TRIP RATING (20 kAIC, 050A THRU 150A)
- ### - SPECIAL "JD2" FRAME TRIP RATING (20 kAIC, 175A THRU 250A)

*NOTICE - SUM OF THREE (3) MAIN BREAKER TRIP RATINGS NOT TO EXCEED 400A

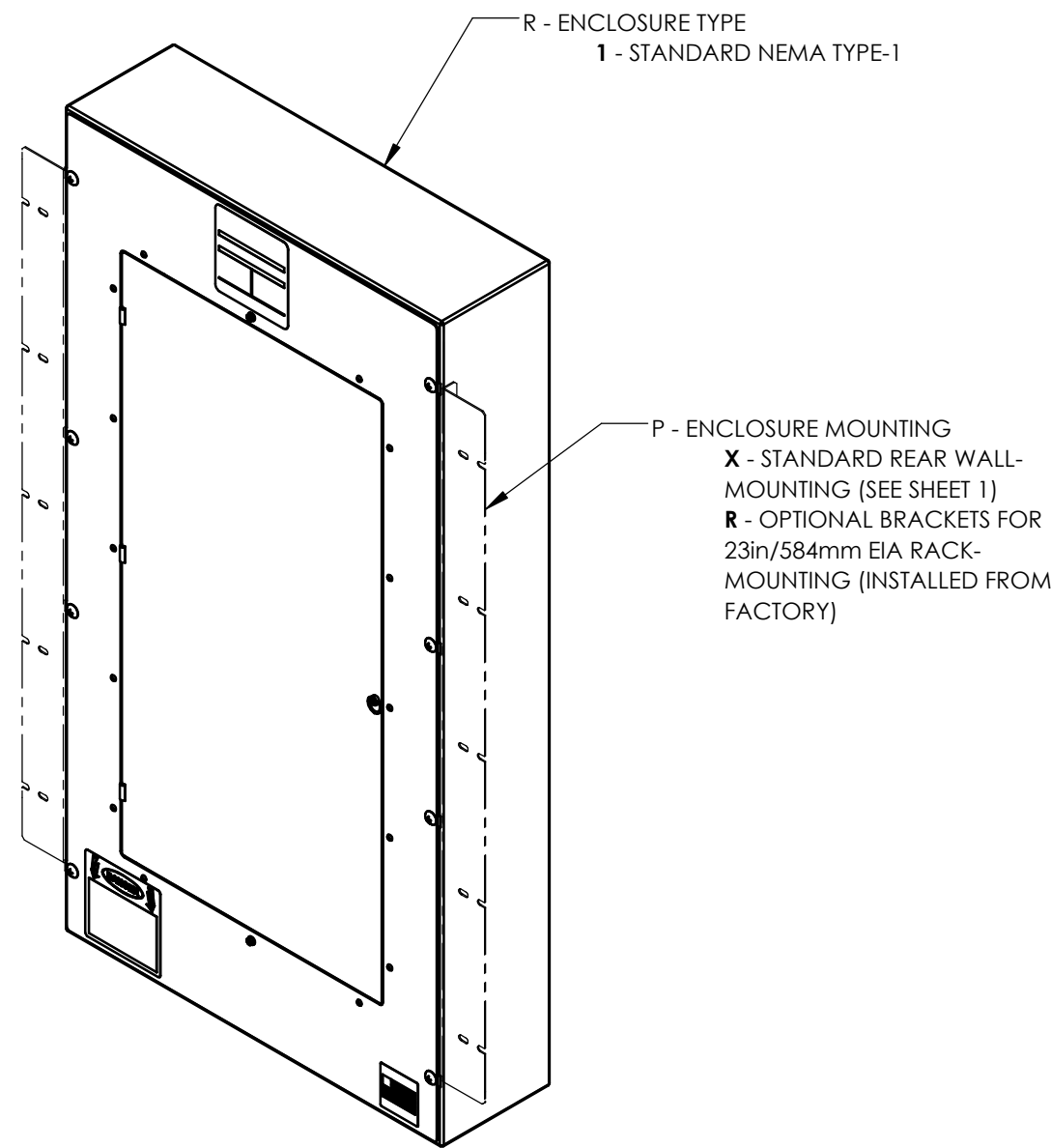
G - BRANCH BREAKERS

- 2 - STANDARD 2-POLE "BDL2" FRAME BREAKERS
DCP38: 1-12 BREAKERS
DCP56: 1-24 BREAKERS
- 1 - OPTIONAL 1-POLE "BDL1" FRAME BREAKERS
DCP38: 1-24 BREAKERS
DCP56: 1-48 BREAKERS



FRONT VIEW

B - BOX HEIGHT "H"



ISO VIEW

R - ENCLOSURE TYPE

- 1 - STANDARD NEMA TYPE-1

P - ENCLOSURE MOUNTING

- X - STANDARD REAR WALL-MOUNTING (SEE SHEET 1)
- R - OPTIONAL BRACKETS FOR 23in/584mm EIA RACK-MOUNTING (INSTALLED FROM FACTORY)

REV. 4	DRN BY MS	CHK BY SW	APP BY SW	DATE 7/14/2022	DRN BY MS	DATE: 12/17/2021		<h1>HINDLEPOWER</h1>	
DESCRIPTION				EXPANDED DOCUMENT TO SHOW EACH SERIES SPECIFICALLY	CHK BY SW	DATE: 12/17/2021			
PROPRIETARY AND CONFIDENTIAL NOTICE				ANY REPRODUCTION, PARTIAL OR AS A WHOLE OF THIS DOCUMENT WITHOUT THE WRITTEN PERMISSION OF HINDLE POWER, INC IS STRICTLY PROHIBITED.	APP BY ND	DATE: 12/17/2021	TITLE	DC CONTROL PANEL	
UNLESS OTHERWISE SPECIFIED ALL DIMENSIONS FOLLOW THE ANSI SYSTEM IPS (INCHES-POUNDS & SECONDS) TOLERANCES ARE: FRAC. ±1/64, DEC. ±.015, ANG ±.25°						SCALE	DWG No	REV	SHEET
				B		1:7	JE5368-00	4	4 OF 4

8

7

6

5

4

3

2

1