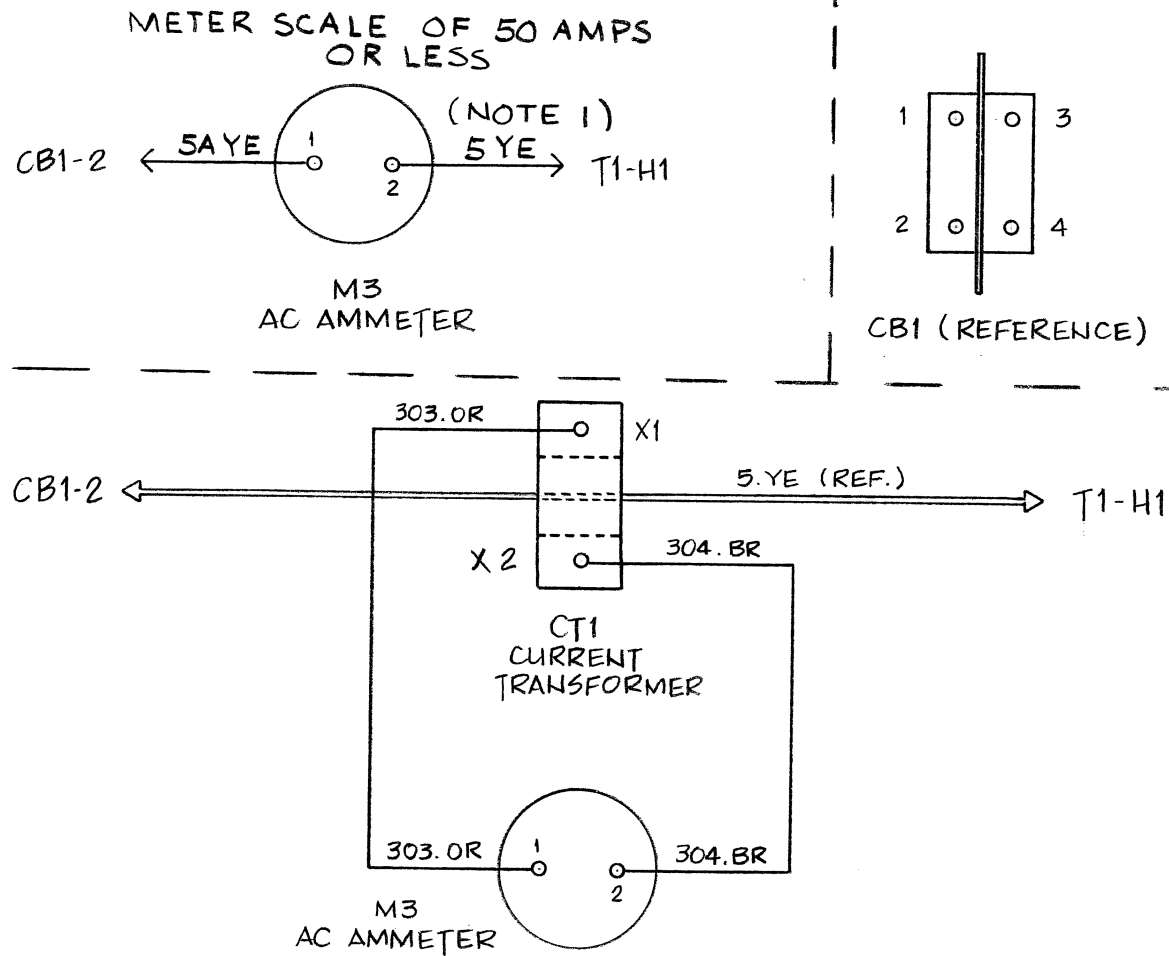


**NOTES:**

- 1) OPTION IS WIRED TO LOAD TERMINAL OF CB1.
- 2) CURRENT TRANSFORMER (CT1) IS NOT REQUIRED FOR AC AMMETERS (M3) RATED 50 Aac OR LESS.

5	21525	02/24/09	MCT	THIRD ANGLE PROJECTION										
4	E0295	12/04/00	MCT											
3	4620	01/05/88	WAH	DRAWN BY	CIA	06/11/85	TITLE 2% ACCY. AC INPUT AMMETER - 1PH INPUT							
3	1727	06/17/85	WKB	APPROVED	WKB	06/17/85	DWG No		A					
2	1225	01/03/85	WAH	UNLESS OTHERWISE NOTED, DIMENSIONS ARE IN INCHES AND TOLERANCES ARE:			EJ0134-XX		REV					
REV	ECN No	DATE	APP								5			
							SCALE	NTS	PART No	EJ0134-XX	SHEET	1	OF	2

WIRE LIST				
No.	CODE	GAUGE	FROM	TO
5A	YE	Note 2	M3-1	CB1-2
303	OR	#16 AWG	CT1-X1	M3-1
304	BR	#16 AWG	CT1-X1	M3-2



**NOTES:**

- 1) WIRE # 5.YE. IS PART OF 1PH SCR/SCRF SERIES MAINFRAME, AND IS REWIRED AS SHOWN.
- 2) WIRE # 5A.YE. IS SIZED THE SAME AS STANDARD WIRE # 5.YE. ACCORDING TO 1PH SCR/SCRF SERIES MAINFRAME WIRE GAUGE CHART.
- 3) FOR 1PH AC AMMETER OPTIONS (EJ0134-XX) WHERE AMMETER (M3) IS RATED 50 Adc OR GREATER, CUT LENGTH OF MAINFRAME WIRE # 5.YE. 24in LONGER THAN NORMAL, TO ALLOW LOOPING THROUGH CURRENT TRANSFORMER (CT1).
- 4) IF PRE-DRILLED CUSTOM INSTRUMENT PANEL IS NOT SUPPLIED IN BOM, OR IS NOT AVAILABLE, CUSTOM CUT AND DRILL FRONT PANEL FOR METER MOUNTING USING HOLE PATTERN (FN5002-00).

		THIRD ANGLE PROJECTION		
DRAWN BY	CIA	06/11/85	TITLE	2% ACCY. AC INPUT AMMETER - 1PH INPUT
APPROVED	WKB	06/17/85	DWG No	EJ0134-XX
UNLESS OTHERWISE NOTED, DIMENSIONS ARE IN INCHES AND TOLERANCES ARE:			A	
SCALE		NTS	PART No	EJ0134-XX
SHEET		2	OF	2