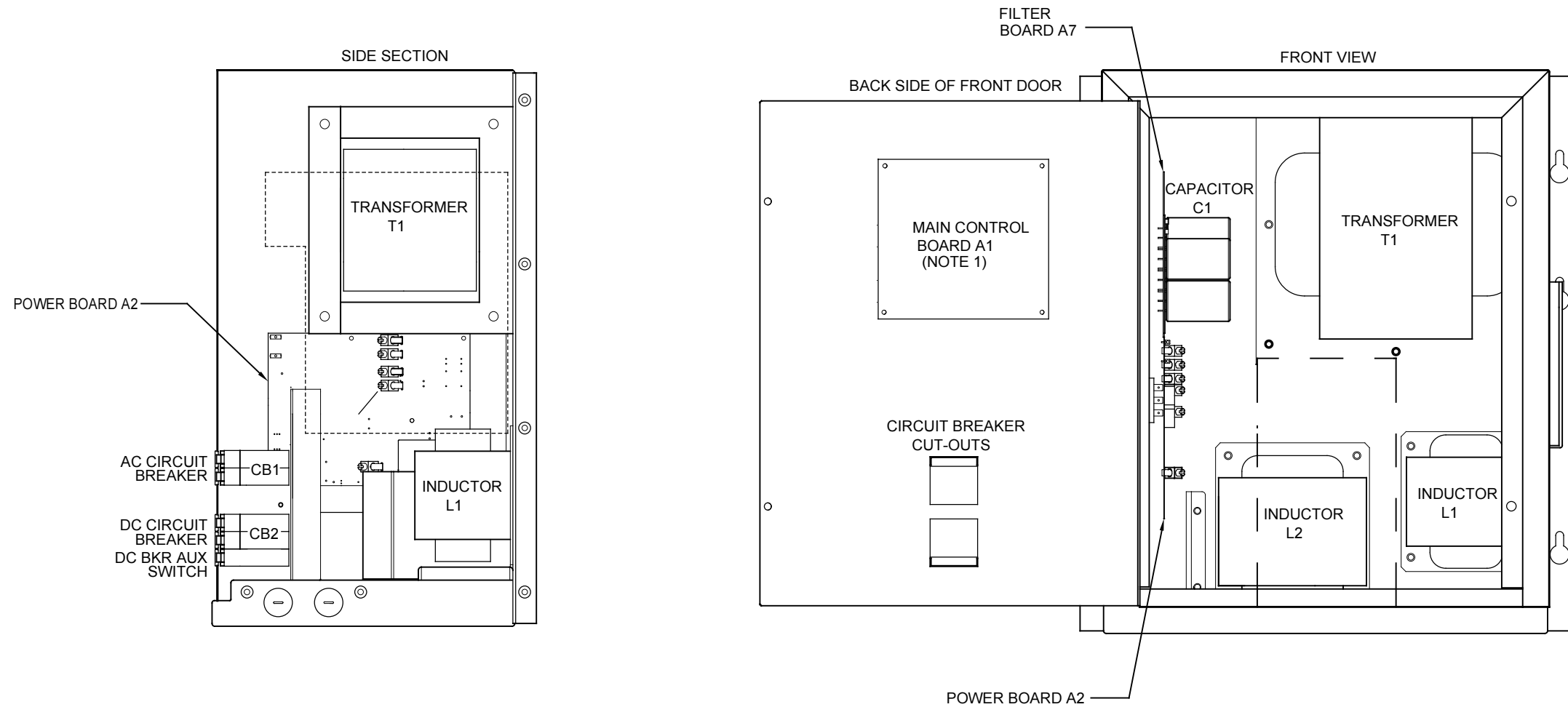


REVISION HISTORY TABLE

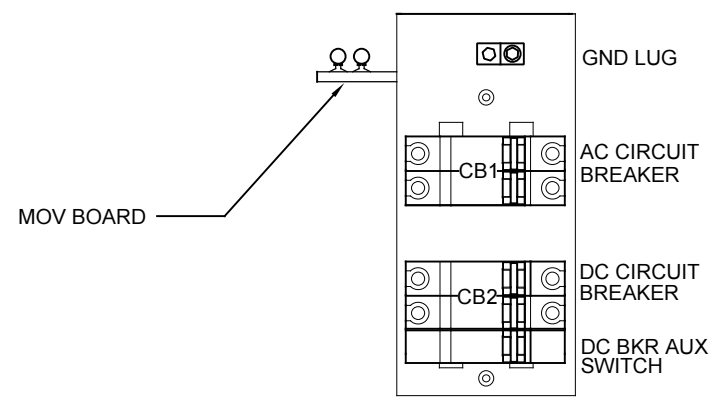
ECN No.	REV.	DESCRIPTION	DATE	APPROVED
25915	0	INITIAL RELEASE	04/07/2017	BB



I/O TERMINAL	DESCRIPTION - TYPE	CONNECTION
CB2	POS/NEG OUTPUT TERMINALS - CU-ALUMINUM COMPRESSION LUG	#14-6 AWG
REM SENSE(+/-)	POS/NEG REMOTE SENSE TERMINALS (A2) - TERMINAL BLOCK	#22-14 AWG
GND LUG	USER GROUND TERMINAL - CU-ALUMINUM COMPRESSION LUG	#14-6 AWG
CB1	AC INPUT TERMINALS - CU-ALUMINUM COMPRESSION LUG	#14-6 AWG
TB6	SUMMARY ALARM TERMINAL BLOCK (A1) - SOLDERLESS COMPRESSION	#22-14 AWG
TB8	TEMPCO PROBE (A2) INTERCONNECTION TERMINAL BLOCK	#22-14 AWG

SYM	STANDARD COMPONENT DESCRIPTION
A1	MAIN CONTROL PC BOARD
A2	POWER BOARD
A3	CAPACITOR BOARD
C1	FILTER CAPACITOR
CB1	AC INPUT CIRCUIT BREAKER (CD2)
CB2	DC OUTPUT CIRCUIT BREAKER (CD2)
L1	MAIN INDUCTOR
L2	INDUCTOR
T1	POWER TRANSFORMER
SYM	FEATURED OPTION COMP DESCRIPTION

NOTES:
 1) FOR DETAIL VIEWS OF ALL PC BOARDS (A1, A2, A3, A4 etc.) SEE DRAWING JE5253 -00.
 2) SAFETY COVER DISPLAYS COMPONENT LAYOUT DIAGRAM, AND CONNECTION DIAGRAM.



THIRD ANGLE PROJECTION		HINDLEPOWER	
DRAWN BY KJB	DATE 04/07/17	TITLE ATEVO SERIES BATTERY CHARGER INTERNAL COMPONENT LAYOUT: STYLE-5054	
ELECTRONIC APPROVAL SIGNATURES MAINTAINED BY MFG ECN LOG		DRAWING No JE5252-00	REV 0
UNLESS OTHERWISE NOTED DIMENSIONS ARE IN INCHES. TOLERANCES ARE:		SCALE NTS	SHEET 1 OF 1
SALES No JE5252-00		SHEET 1 OF 1	