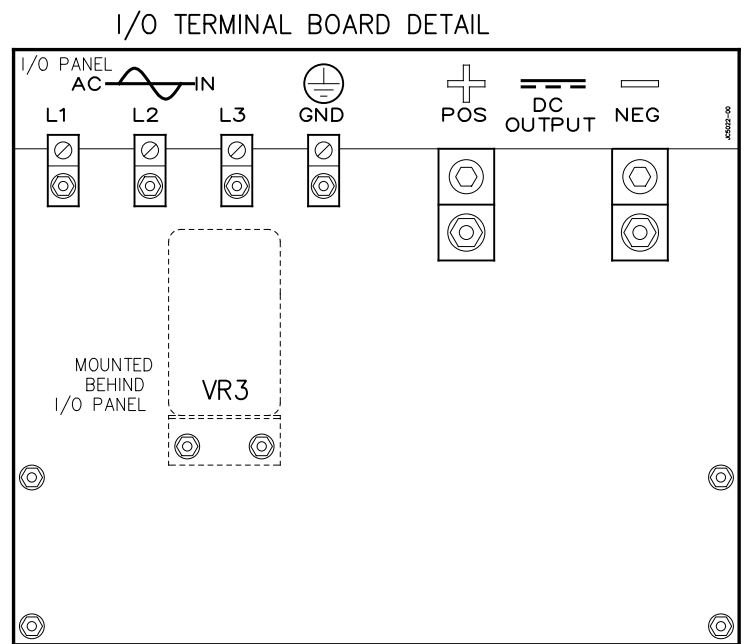
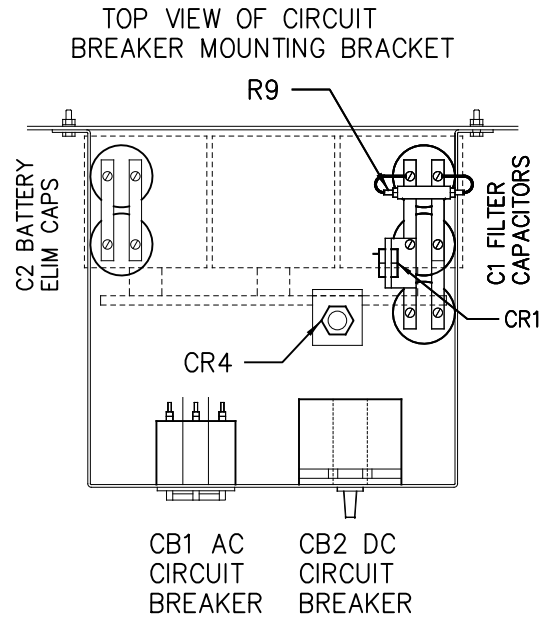
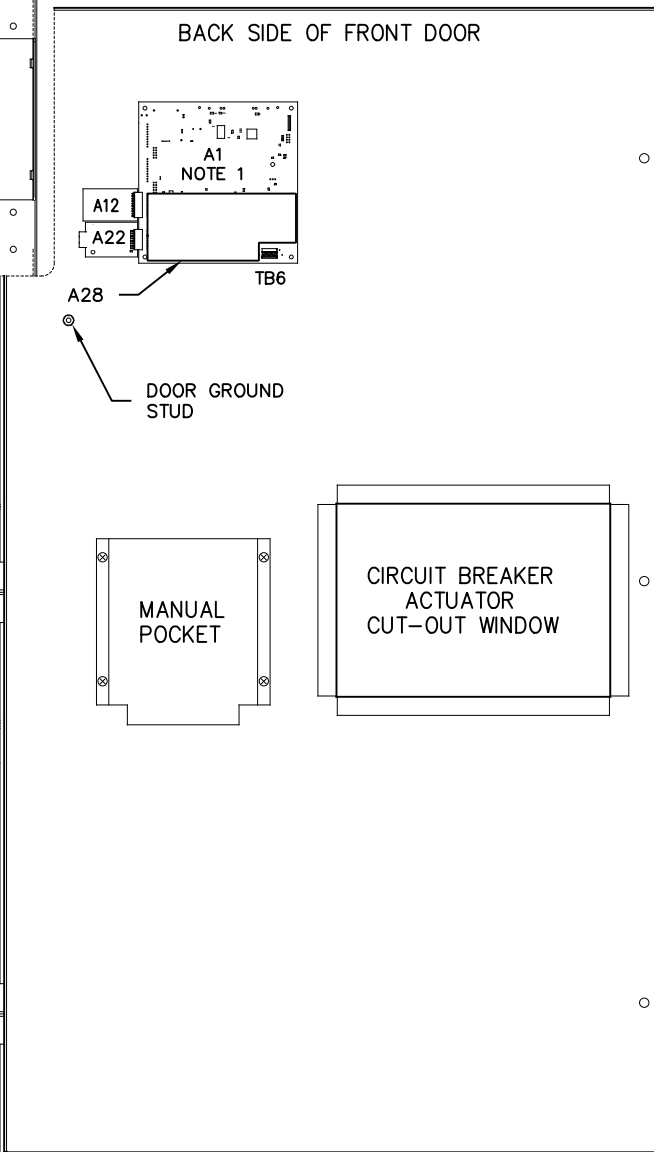
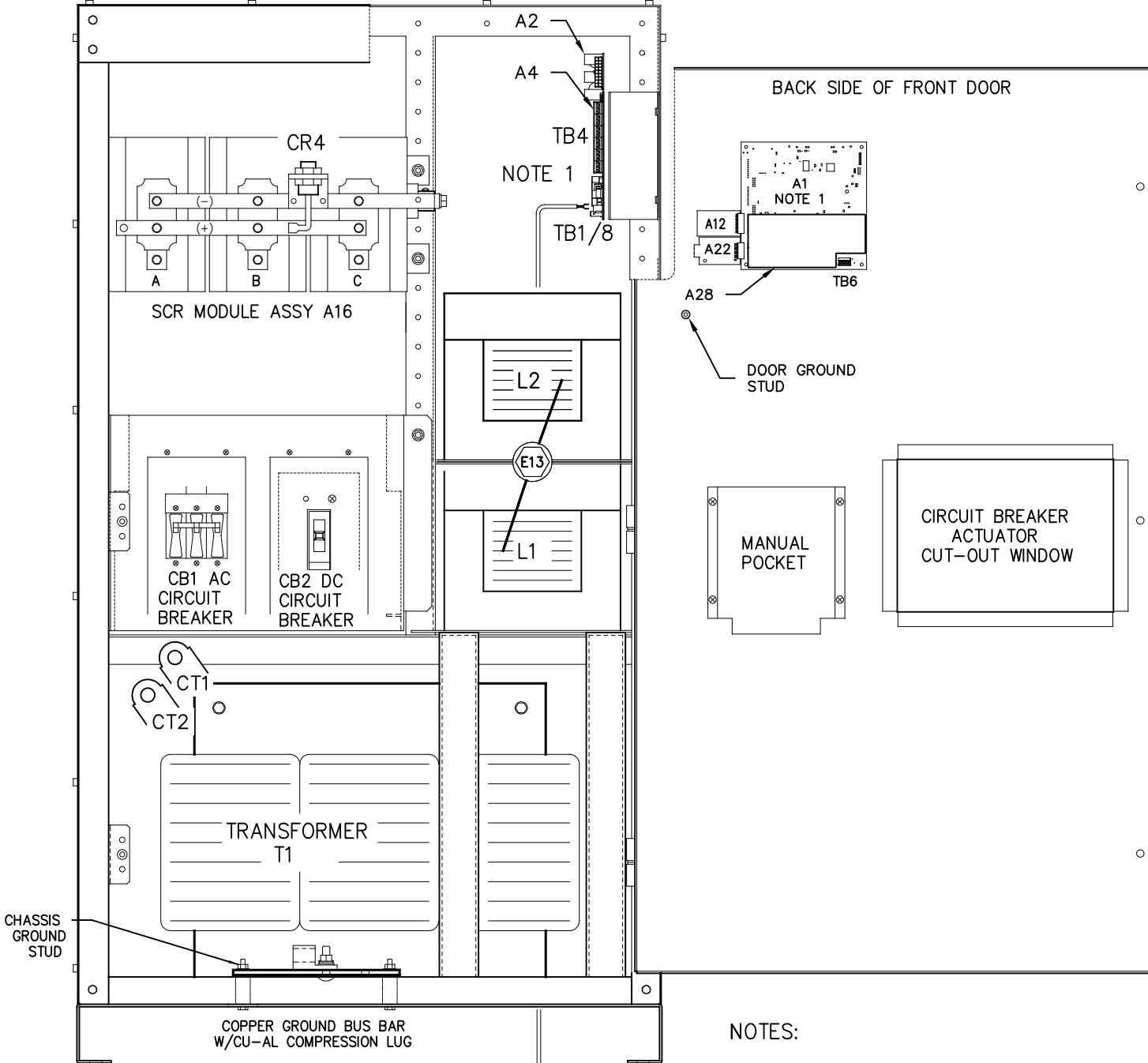
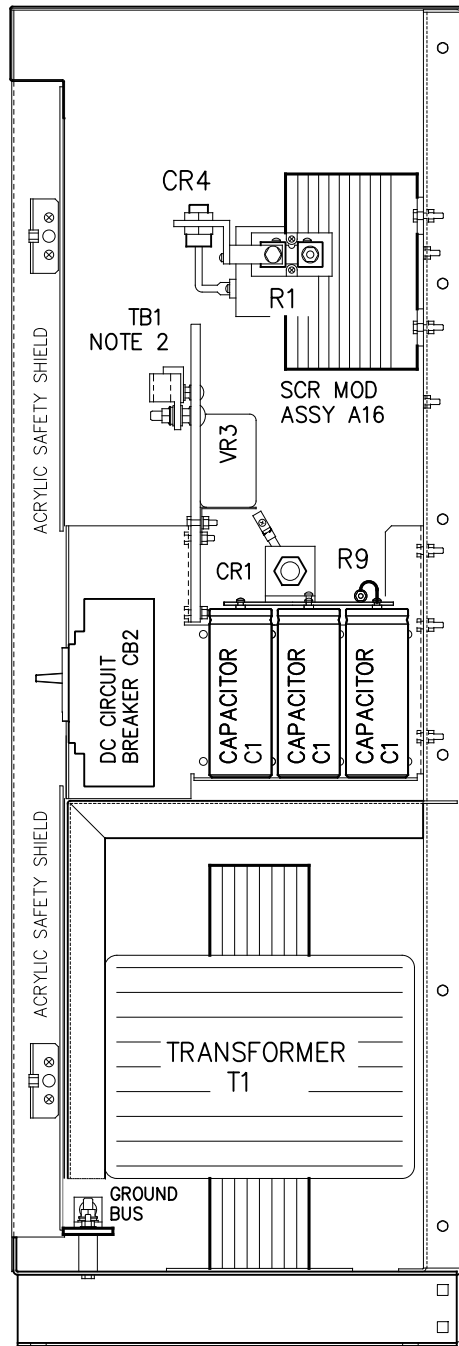


SIDE SECTION

FRONT VIEW



SYM STANDARD COMPONENT DESCRIPTION

- A1 MAIN CONTROL PC BOARD
- A2 THREE PHASE POWER BOARD
- A9 MOV PC BOARD
- A16 6-PULSE SCR MODULE HEATSINK ASSY
- CB1 AC INPUT CIRCUIT BREAKER (CD3)
- CB2 DC OUTPUT CIRCUIT BREAKER (Jx2)
- CR4 FREE-WHEELING DIODE
- I/O I/O TERMINAL BOARD
- L1 MAIN INDUCTOR
- R1 MAIN DC SHUNT, NEG(-) BUS
- T1 POWER ISOLATION TRANSFORMER
- TB1A REMOTE SENSE (A2)
- TB6 SUMMARY ALARM CONTACTS
- TB8 TEMPCO PROBE TERMINAL BLOCK

SYM FEATURED OPTION COMP DESCRIPTION

- A4 AUXILIARY ALARM RELAY PC BOARD
- A10 TEMPERATURE COMPENSATION PROBE
- A12 SERIAL ADAPTER BOARD
- A22 ETHERNET ADAPTER BOARD
- A28 METER MODULE PC BOARD
- C1x DC OUTPUT FILTER CAPACITOR
- C2 BATTERY ELIMINATOR CAPACITOR
- CR1 POLARITY DIODE
- E13 INDUCTOR INTER-CONNECT POINT
- CT# AC LINE CURRENT XFMR (MOUNTED TO WIRE)
- E13 INDUCTOR INTER-CONNECT POINT
- L2 FILTER INDUCTOR
- R9 FILTER CAP (C1) BLEED RESISTOR
- R30 BATT DSCH SENSING DC SHUNT
- R9 FILTER CAP (C1) BLEED RESISTOR
- TB4 AUX ALARM PCB (A4) TERM BLOCK
- VR3 AC INPUT LIGHTNING ARRESTOR

NOTES:

- 1) FOR DETAIL VIEWS OF ALL PC BOARDS (A1, A2, A4, A12, A22, etc.) SEE DRAWING JE5338-99
- 2) I/O PANEL TERMINAL BOARD NOT SHOWN FOR CLARITY OF VIEW. SEE DETAIL TO RIGHT.

I/O TERMINAL	DESCRIPTION - TYPE	CONNECTION
I/O(+/-)	POS/NEG DC OUTPUT TERMS - CU-ALUMINUM COMPRESSION LUG	#6 AWG-350 MCM
(2) I/O-GND	USER GROUND TERMINAL - CU-ALUMINUM COMPRESSION LUG	#14 AWG-350 MCM
I/O-L1/L2/L3	AC INPUT TERMINALS - CU-ALUMINUM COMPRESSION LUG	#14-1/O AWG
TB4	AUXILIARY ALARM TERM BLOCK - SOLDERLESS COMPRESSION	#22-14 AWG

REV. 0	DRN BY KJB	CHK BY MCR	APP BY MCR	DATE 2/26/2020	DRN BY KJB	DATE: 2/26/2020
DESCRIPTION: STANDARD DRAWINGS.				CHK BY MCR	DATE: 2/26/2020	
				CHK BY MCR	DATE: 2/26/2020	

HINDLEPOWER

1075 Saint John Street
Easton, PA 18042-6661
PH 610-330-9000 FAX 610-330-8510
www.hindlepowerinc.com

TITLE: **ATEVO 3PH BATTERY CHARGER
INTERNAL COMPONENT LAYOUT: STYLE-5030**

SCALE: **B** DWG No: **JE5338-99** REV: 0 SHEET: 1 OF 1