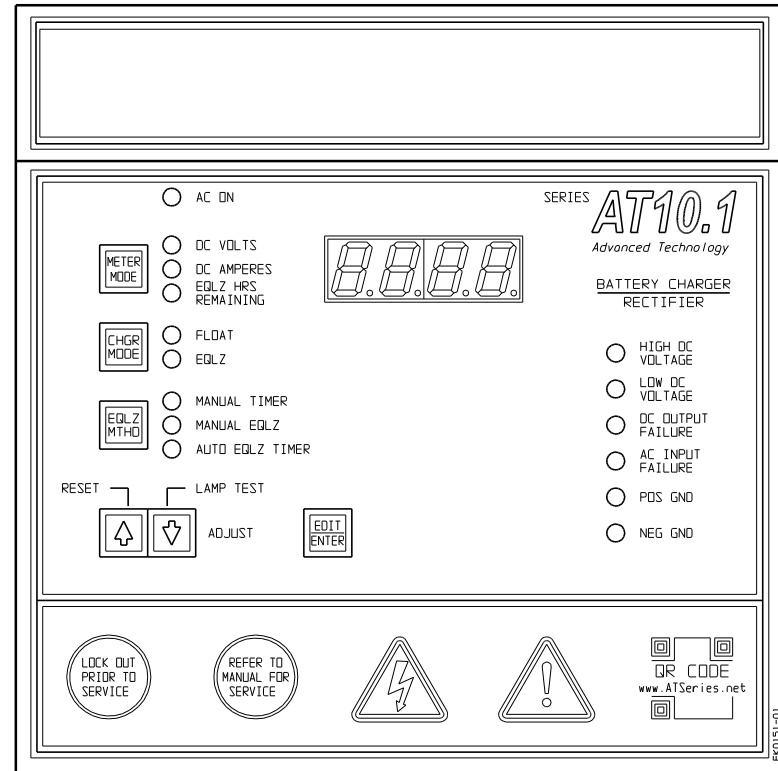


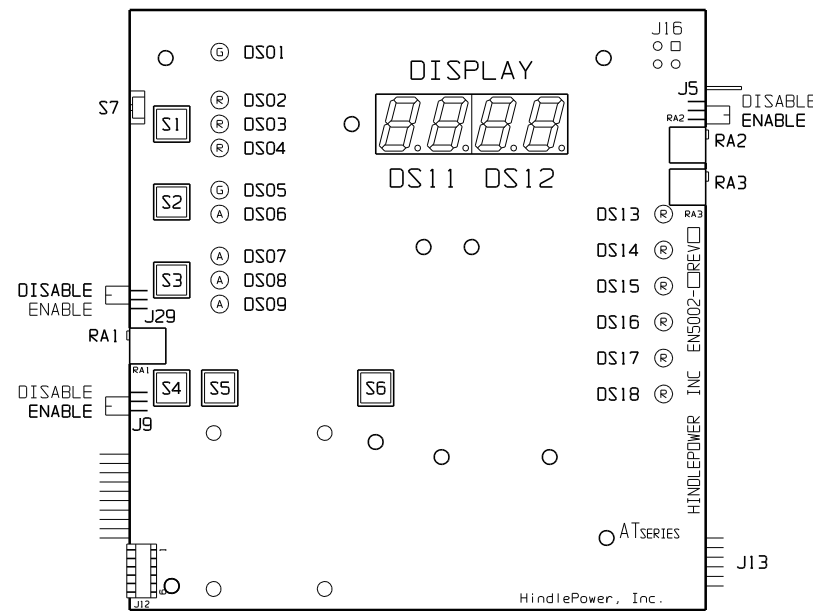
INDICATOR LIGHTS (LEDs):

- | | |
|-------------------------------------|--------------------------------|
| DS01 - GREEN - AC ON | DS10 - RED - LOW LEVEL DETECT |
| DS02 - RED - DC VOLTS | DS11 - RED - (METER DISPLAY) |
| DS03 - RED - DC AMPERES | DS12 - RED - (METER DISPLAY) |
| DS04 - RED - EQUALIZE HRS REMAINING | DS13 - RED - HIGH DC VOLTAGE |
| DS05 - GREEN - FLOAT | DS14 - RED - LOW DC VOLTAGE |
| DS06 - AMBER - EQUALIZE | DS15 - RED - DC OUTPUT FAILURE |
| DS07 - AMBER - MANUAL TIMER | DS16 - RED - AC INPUT FAILURE |
| DS08 - AMBER - MANUAL EQUALIZE | DS17 - RED - POSITIVE GROUND |
| DS09 - AMBER - AUTO EQUALIZE TIMER | DS18 - RED - NEGATIVE GROUND |



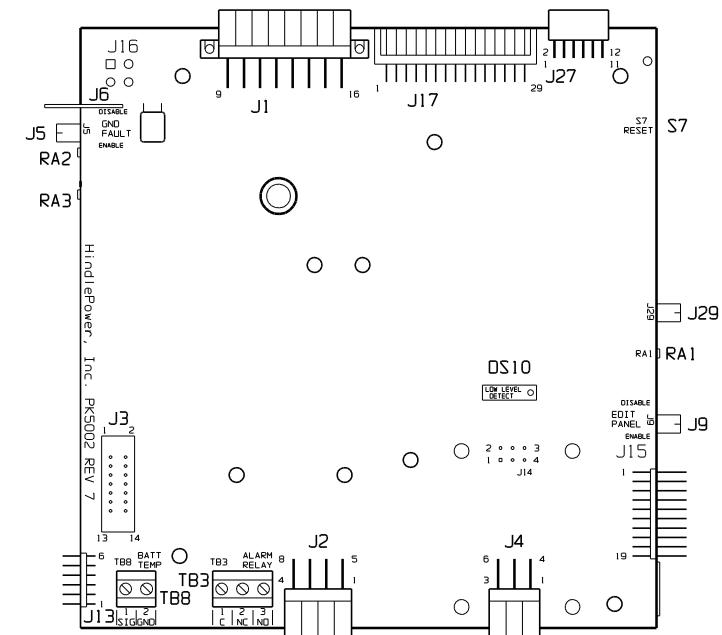
INSTRUMENT PANEL
(PART No. FK0151-01)

NOTE: UNLESS OTHERWISE SPECIFIED, ALL ALARM TERMINAL BLOCKS (TB3/TB4/TB8) ARE SOLDERLESS COMPRESSION TERMINALS, ACCEPTING #22-14 AWG WIRE. ALL ALARM CONTACTS SHOWN IN NON-ALARM STATE, WITH CHARGER ENERGIZED AND ALARM RELAYS ENERGIZED (FAIL SAFE). ALL ALARM CONTACTS WILL CHANGE STATE WHEN CHARGER IS POWERED DOWN. CONTACT RATING IS 0.5A @ 125VAC/VDC RESISTIVE.



MAIN CONTROL PC BOARD (A1)

FRONT VIEW - FACING CHARGER DOOR WHEN INSTALLED



MAIN CONTROL PC BOARD (A1)

BACK VIEW - FACING CHARGER COMPONENTS WHEN INSTALLED

USER JUMPERS:

- J1 - MAINFRAME SIGNAL HARNESS
- J2 - AUX ALARM RELAY BOARD (A5) SERIAL CONNECTOR
- J4 - FORCED LOAD SHARING CABLE INTERCONNECTOR
- J5 - GROUND FAULT ENABLE/DISABLE
- J6 - EARTH GROUND CONNECTOR
- J9 - FRONT PANEL ENABLE/DISABLE (LOCKOUT)
- J13 - COMMUNICATIONS PC BOARD (A12) INTERCONNECTOR
- J17 - HD GATE DRIVER PC BOARD (A11) INTERCONNECTOR

- J27 - NOT USED (3PH GATE DRIVER PCB INTERCONNECTOR)
- J29 - LATCHING ALARMS ENABLE/DISABLE

SWITCHES:

- S1 - METER MODE
- S2 - CHARGER MODE
- S3 - EQUALIZE METHOD
- S4 - Δ ADJUST
- S5 - ∇ ADJUST
- S6 - EDIT / ENTER
- S7 - PROCESSOR MANUAL RESET

TERMINAL BLOCKS:

- TB3 - SUMMARY ALARM RELAY CONTACTS
- TB8 - OPTIONAL TEMPCO PROBE (A10) INTERCONNECTOR

OTHER CONTROLS:

- RA1 - LOW LEVEL DETECT ADJUST
- RA2 - GROUND FAULT BALANCE
- RA3 - GROUND FAULT SENSITIVITY

NON-USER ACCESSED JUMPERS:

- J3 - OLD A5 RIBBON CONNECTOR
- J12 - BOARD PROGRAMMING
- J14 - OLD FORCED LOAD SHARING
- J15 - MANUFACTURING TEST
- J16 - OLD INTERNAL TEMP

| | | | | | |
|-----|--------|--------|--|--|--|
| 4 | 23006 | 020812 | THIRD ANGLE PROJECTION | TITLE AT10.1 SERIES BATTERY CHARGER (GROUP I) INSTRUMENT PANEL / PC BOARD DETAIL (STANDARD) | |
| 3 | 21922 | 120209 | | | |
| 2 | 21097 | 041108 | DRAWN BY MCR | 022003 | DRAWING No JE5030-10 |
| 1 | E2044 | 051705 | APPROVED | 022003 | |
| 0 | E1141 | 022003 | UNLESS OTHERWISE NOTED DIMENSIONS ARE IN INCHES. TOLERANCES ARE: | | SCALE NTS PART No JE5030-10 SHEET 1 OF 1 |
| REV | ECN No | DATE | | | |