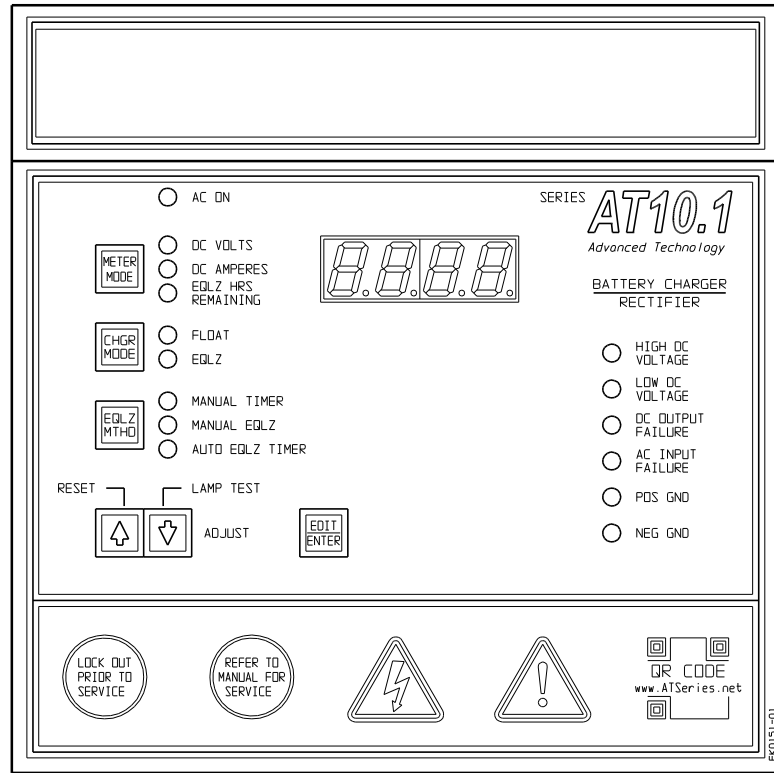


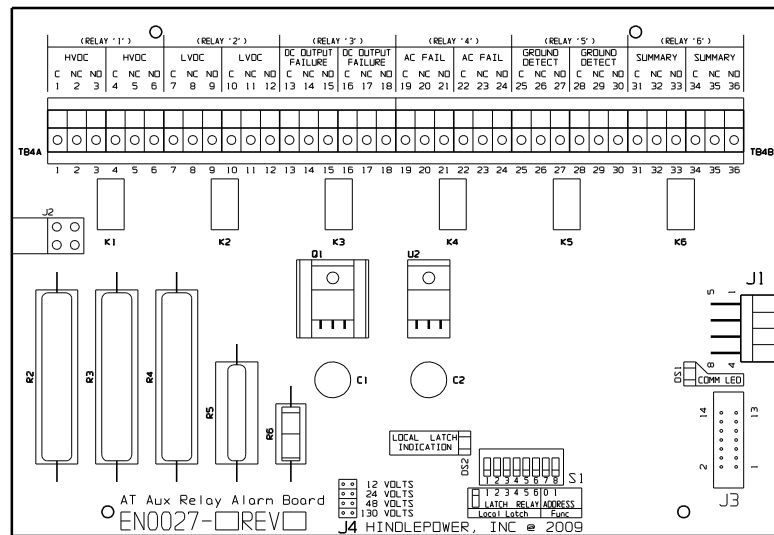
INDICATOR LIGHTS (LEDs):

- | | |
|-------------------------------------|--------------------------------|
| DS01 - GREEN - AC ON | DS10 - RED - LOW LEVEL DETECT |
| DS02 - RED - DC VOLTS | DS11 - RED - (METER DISPLAY) |
| DS03 - RED - DC AMPS | DS12 - RED - (METER DISPLAY) |
| DS04 - RED - EQUALIZE HRS REMAINING | DS13 - RED - HIGH DC VOLTAGE |
| DS05 - GREEN - FLOAT | DS14 - RED - LOW DC VOLTAGE |
| DS06 - AMBER - EQUALIZE | DS15 - RED - DC OUTPUT FAILURE |
| DS07 - AMBER - MANUAL TIMER | DS16 - RED - AC INPUT FAILURE |
| DS08 - AMBER - MANUAL EQUALIZE | DS17 - RED - POSITIVE GROUND |
| DS09 - AMBER - AUTO EQUALIZE TIMER | DS18 - RED - NEGATIVE GROUND |



INSTRUMENT PANEL
(PART No. FK0151-01)

NOTE: UNLESS OTHERWISE SPECIFIED, ALL ALARM TERMINAL BLOCKS (TB3/TB4/TB8) ARE SOLDERLESS COMPRESSION TERMINALS, ACCEPTING #22-14 AWG WIRE. ALL ALARM CONTACTS SHOWN IN NON-ALARM STATE, WITH CHARGER ENERGIZED AND ALARM RELAYS ENERGIZED (FAIL SAFE). ALL ALARM CONTACTS WILL CHANGE STATE WHEN CHARGER IS POWERED DOWN. CONTACT RATING IS 0.5A @ 125VAC/VDC RESISTIVE.



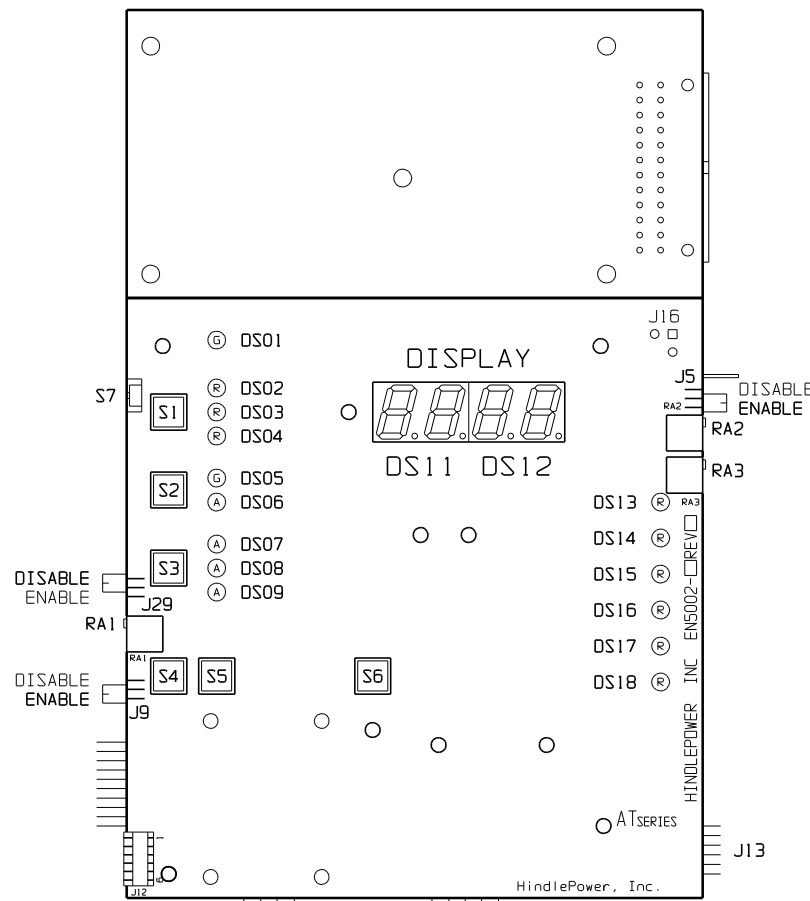
AUXILIARY ALARM RELAY PC BOARD (A5)

A5-J1 CONNECTED TO A1-J2 VIA EH5045-XX 8-PIN SERIAL CABLE

OTHER CONTROLS:
RA1 - LOW LEVEL DETECT ADJUST
RA2 - GROUND FAULT BALANCE
RA3 - GROUND FAULT SENSITIVITY

NON-USER ACCESSED JUMPERS:
J3 - OLD A5 RIBBON CONNECTOR
J12 - BOARD PROGRAMMING
J14 - OLD FORCED LOAD SHARING
J15 - MANUFACTURING TEST
J16 - OLD INTERNAL TEMP

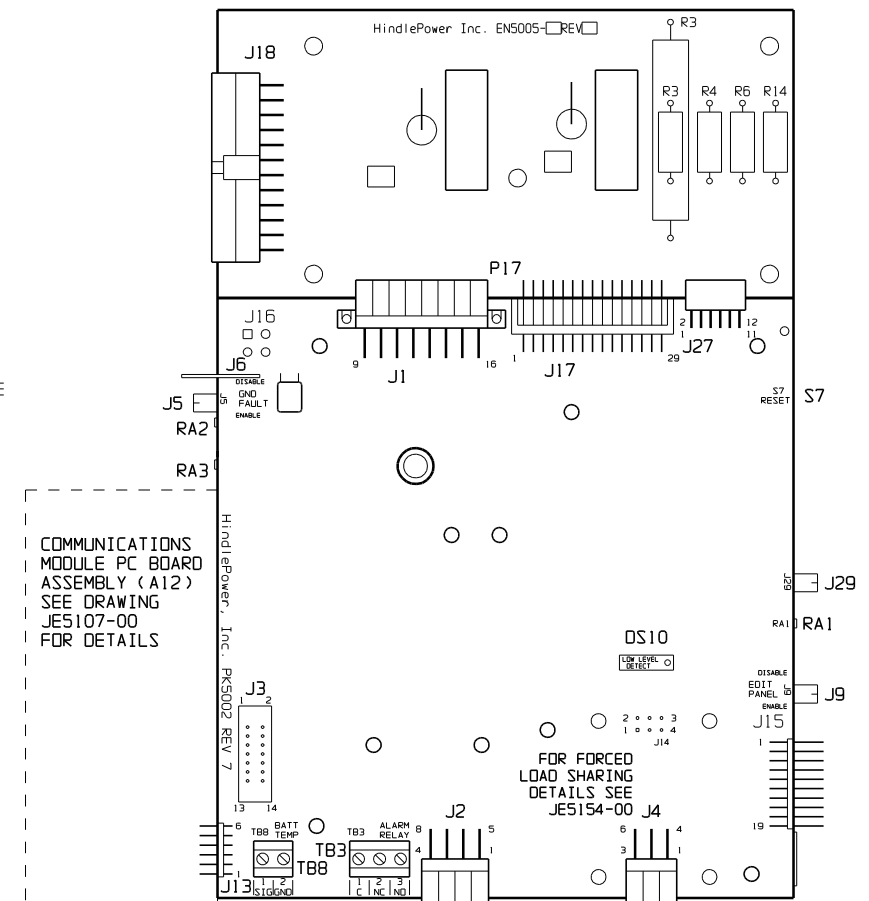
HIGH-OUTPUT GATE DRIVER PC BOARD (A11)



MAIN CONTROL PC BOARD (A1)

FRONT VIEW - FACING CHARGER DOOR WHEN INSTALLED

HIGH-OUTPUT GATE DRIVER PC BOARD (A11)



MAIN CONTROL PC BOARD (A1)

BACK VIEW - FACING CHARGER COMPONENTS WHEN INSTALLED

USER JUMPERS:

- J1 - MAINFRAME SIGNAL HARNESS (NOT USED IN 30-100A)
- J2 - AUX ALARM RELAY BOARD (A5) SERIAL CONNECTOR
- J4 - FORCED LOAD SHARING CABLE INTERCONNECTOR
- J5 - GROUND FAULT ENABLE/DISABLE
- J6 - EARTH GROUND CONNECTOR
- J9 - FRONT PANEL ENABLE/DISABLE (LOCKOUT)
- J13 - COMMUNICATIONS PC BOARD (A12) INTERCONNECTOR
- J17 - HD GATE DRIVER PC BOARD (A11) INTERCONNECTOR
- J18 - MAINFRAME SIGNAL HARNESS (30-100A OUTPUT)
- J27 - NOT USED (3PH GATE DRIVER PCB INTERCONNECTOR)
- J29 - LATCHING ALARMS ENABLE/DISABLE

SWITCHES:

- S1 - METER MODE
- S2 - CHARGER MODE
- S3 - EQUALIZE METHOD
- S4 - Δ ADJUST
- S5 - ∇ ADJUST
- S6 - EDIT / ENTER
- S7 - PROCESSOR MANUAL RESET

TERMINAL BLOCKS:

- TB3 - SUMMARY ALARM RELAY CONTACTS
- TB4 - AUX ALARM RELAY CONTACTS
- TB8 - OPTIONAL TEMPCO PROBE (A10) INTERCONNECTOR

4	23006	020812	THIRD ANGLE PROJECTION	DRAWN BY MCR 022003	TITLE AT10.1 SERIES BATTERY CHARGER (GROUP II) INSTRUMENT PANEL / PC BOARD DETAIL (OPTIONAL)
3	21922	120209			
2	21097	041108	APPROVED <i>[Signature]</i> 022003	DRAWING No JE5030-29	REV 4 B
1	E2044	051705			
0	E1141	022003	UNLESS OTHERWISE NOTED DIMENSIONS ARE IN INCHES. TOLERANCES ARE:		
REV	ECN No	DATE	SCALE NTS	PART No JE5030-29	SHEET 1 OF 1