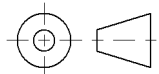
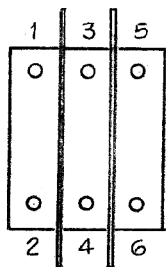


P/N	MFSC ⁽¹⁾	TURNS ⁽²⁾
-00	10A	6
-01	20A	3
-02	30A	2
-03	50A	2
-04	75A	1
-05	100A	1
-06	150A	1
-07	300A	1
-08	5A	12

NOTES:

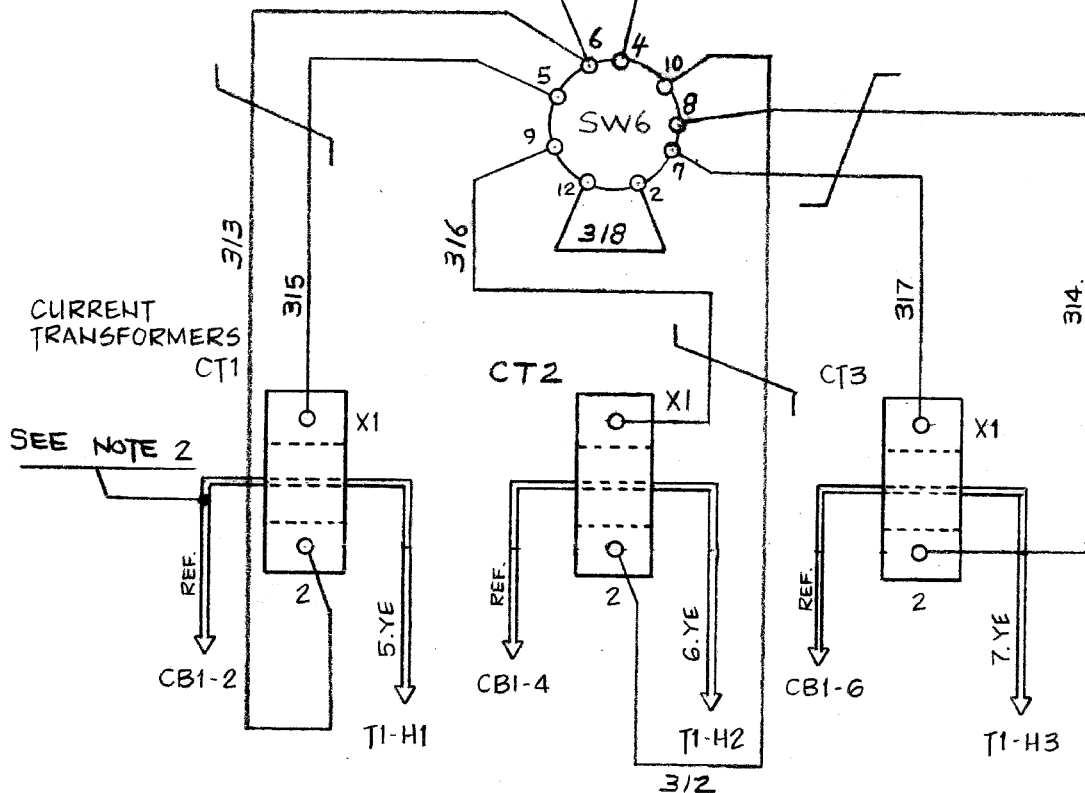
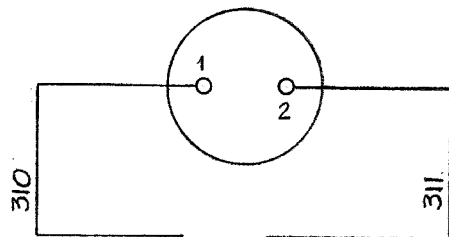
- 1) OPTION IS WIRED TO LOAD TERMINAL OF CB1.
- 2) IN TABLE ABOVE, "MFSC" REFERS TO METER FULL-SCALE CURRENT.
- 3) IN TABLE ABOVE, "TURNS" REFERS TO THE NUMBER OF CONDUCTOR PASSES THROUGH CENTER OF CURRENT TRANSFORMERS.

6	21575	03/19/09	ND	 THIRD ANGLE PROJECTION			TITLE		2% ACCY. AC INPUT AMMETER - 3PH INPUT						
5C	10507	11/11/93	WAH		DRAWN BY	CIA	06/11/85	DWG No		<h1 style="margin: 0;">EJ0135-XX</h1>					
5A	9092	08/28/92	LB	APPROVED	WKB	06/11/85			A REV 6						
5	9024	08/05/92	WKB	UNLESS OTHERWISE NOTED, DIMENSIONS ARE IN INCHES AND TOLERANCES ARE:											
4	5370	09/24/90	MCT												
REV	ECN No	DATE	APP					SCALE	NTS	PART No	EJ0135-XX	SHEET	1	OF	2



CB1 (REFERENCE)

M3
AMMETER



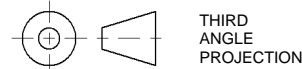
WIRE LIST

No.	CODE	GAUGE	PAIRS	FROM	TO
5,6,7	YE	Note 1	N/A	Note 1	Note 1
310	BK	#16 AWG	N/A	SW6-6	M3-1
311	BK	#16 AWG	N/A	SW6-4	M3-2
312	BK	#16 AWG	w/316	SW6-10	CT2-2
313	BK	#16 AWG	w/315	SW6-6	CT1-2
314	BK	#16 AWG	w/317	SW6-8	CT3-2
315	BK	#16 AWG	w/313	SW6-5	CT1-X1
316	BK	#16 AWG	w/312	SW6-9	CT2-X1
317	BK	#16 AWG	w/314	SW6-7	CT3-X1
318	BK	#16 AWG	N/A	SW6-2	SW6-12

P/N	MFSC ⁽¹⁾	TURNS ⁽²⁾
-00	10A	6
-01	20A	3
-02	30A	2
-03	50A	2
-04	75A	1
-05	100A	1
-06	150A	1
-07	300A	1
-08	5A	12

NOTES:

- 1) WIRE #s 5, 6 & 7 ARE PART OF 3PH SCR/SCRF MAINFRAME, AND ARE WIRED AS SHOWN.
- 2) IN TABLE ABOVE, "MFSC" REFERS TO METER FULL-SCALE CURRENT.
- 3) IN TABLE ABOVE, "TURNS" REFERS TO THE NUMBER OF CONDUCTOR PASSES THROUGH CENTER OF CURRENT TRANSFORMERS.
- 4) CONTACTS 1+5, 3+7, 6+10 AND 2+12 ON SWITCH (SW6) ARE JUMPERED, PRE-WIRED FROM THE SUPPLIER.
- 5) IF PRE-DRILLED CUSTOM INSTRUMENT PANEL IS NOT SUPPLIED IN BOM, OR IS NOT AVAILABLE, CUSTOM CUT AND DRILL FRONT PANEL FOR METER MOUNTING USING HOLE PATTERN (FN5002-01).



THIRD
ANGLE
PROJECTION

DRAWN BY **CIA** 06/11/85

APPROVED **WKB** 06/11/85

UNLESS OTHERWISE NOTED, DIMENSIONS ARE IN INCHES AND TOLERANCES ARE:

TITLE **2% ACCY. AC INPUT AMMETER - 3PH INPUT**

DWG No

EJ0135-XX

A

REV
6

SCALE **NTS** PART No **EJ0135-XX** SHEET **2** OF **2**