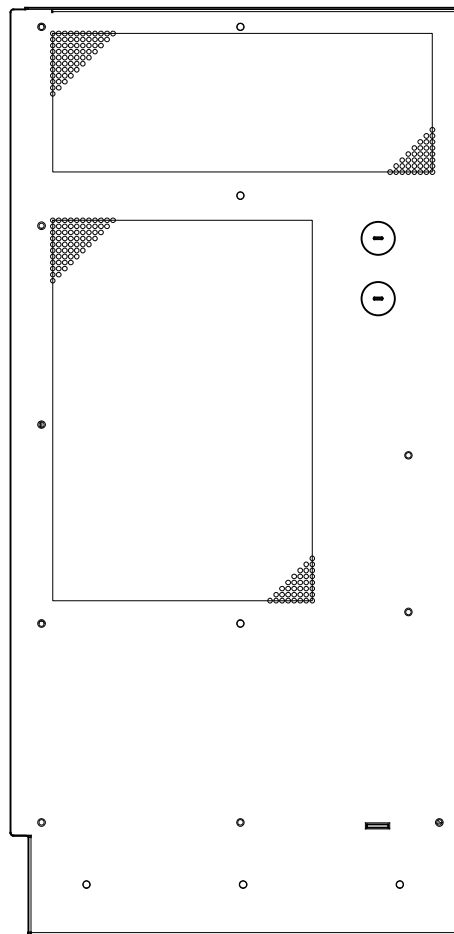
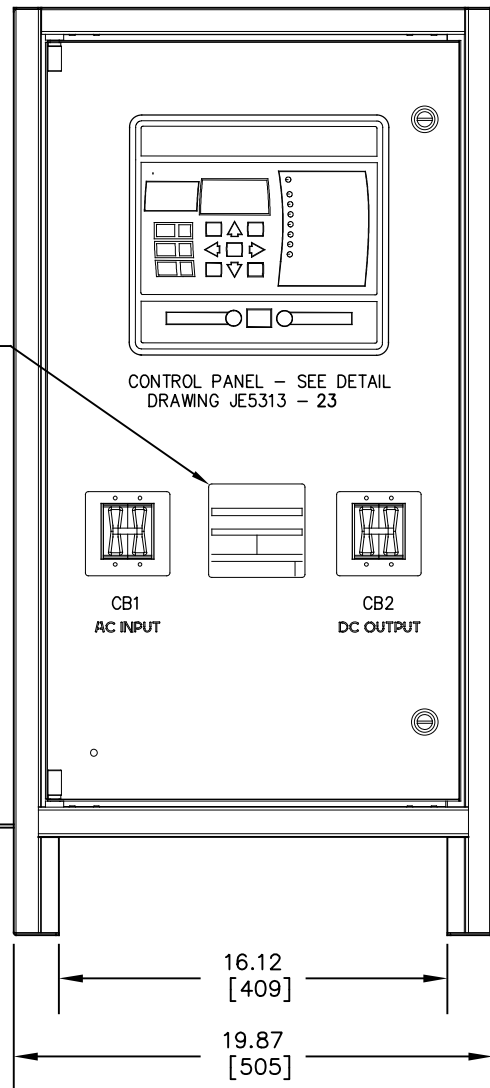


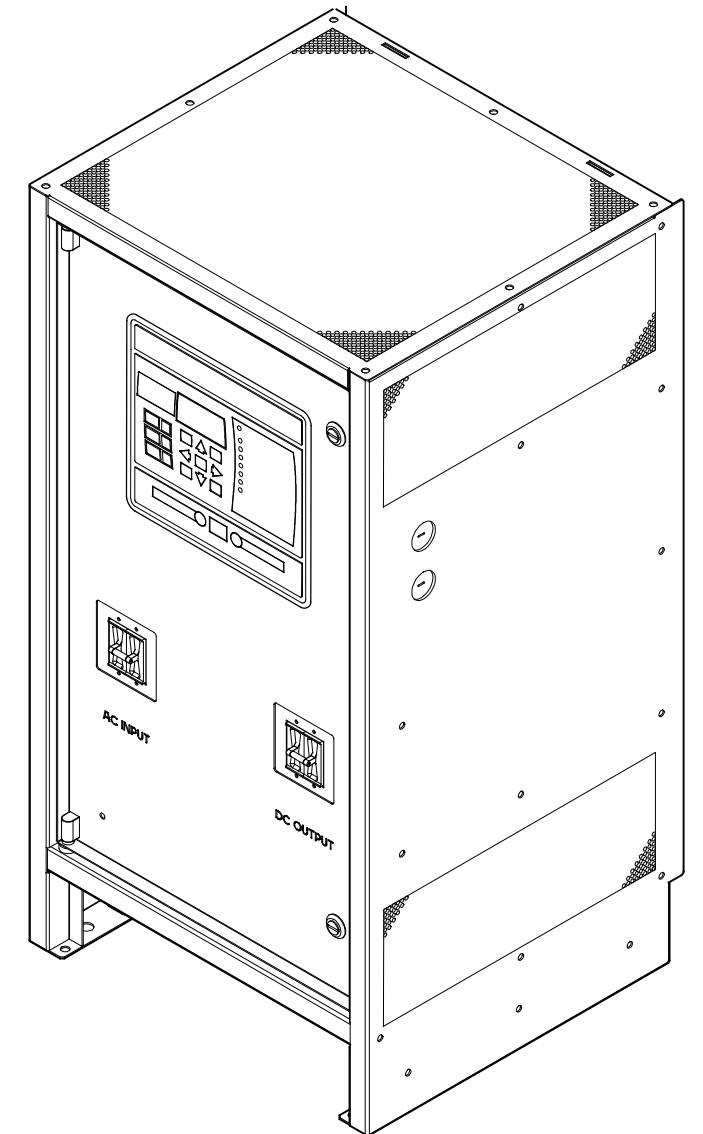
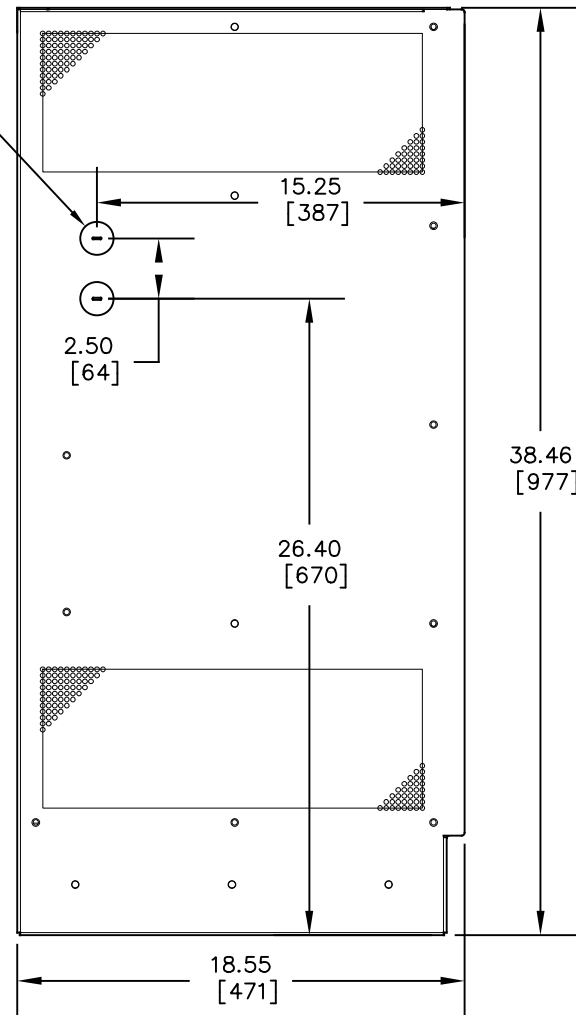
LEFT SIDE VIEW



FRONT VIEW



RIGHT SIDE VIEW



NOTE 3

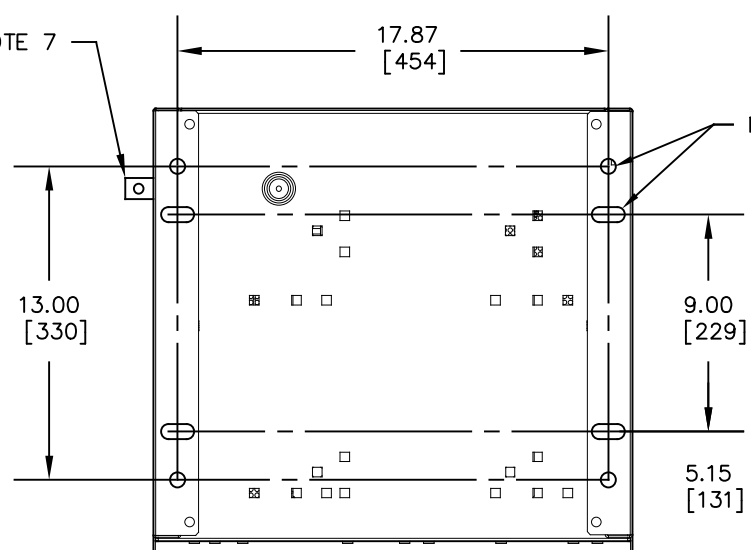
NOTE 5

NOTE 7

NOTE 4

NOTES:

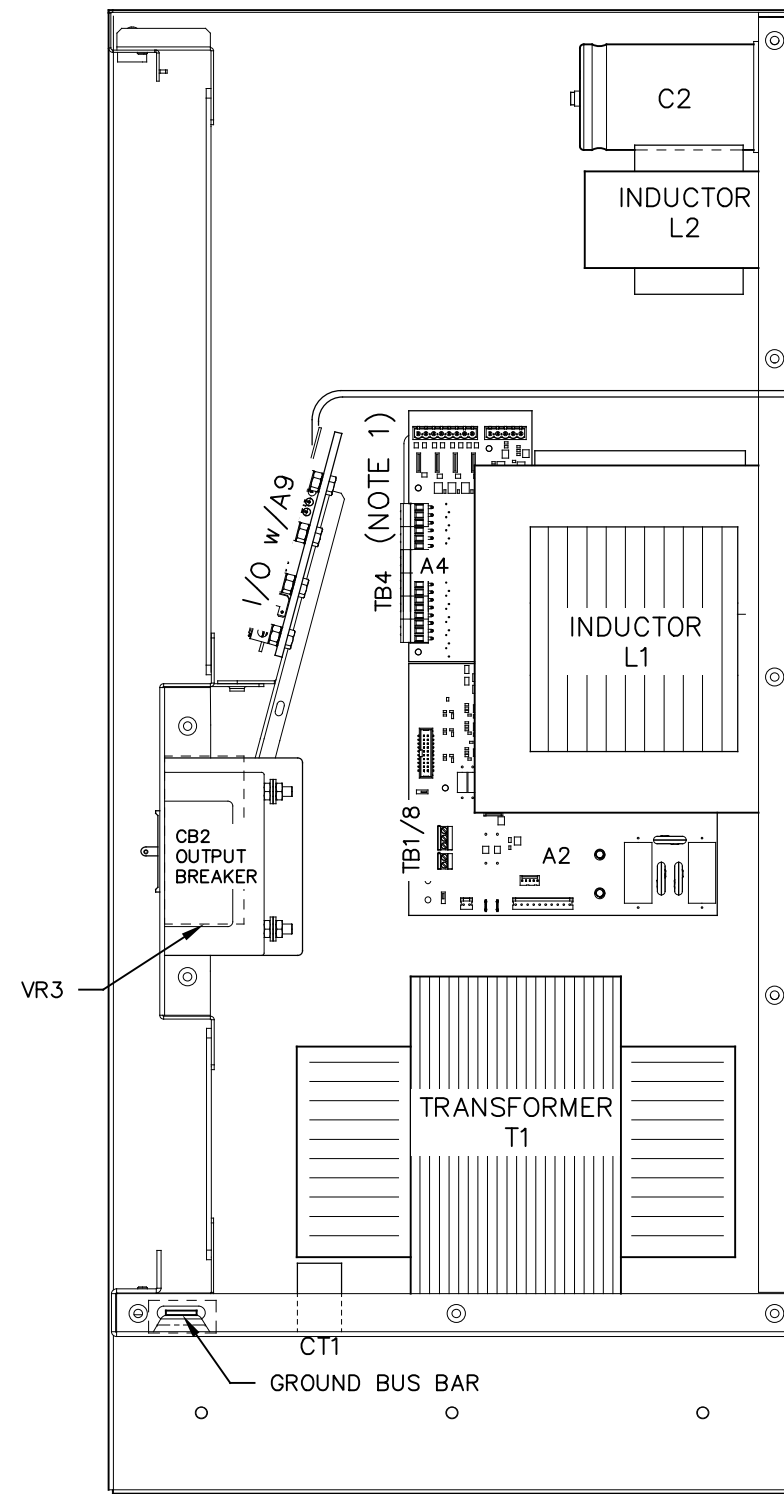
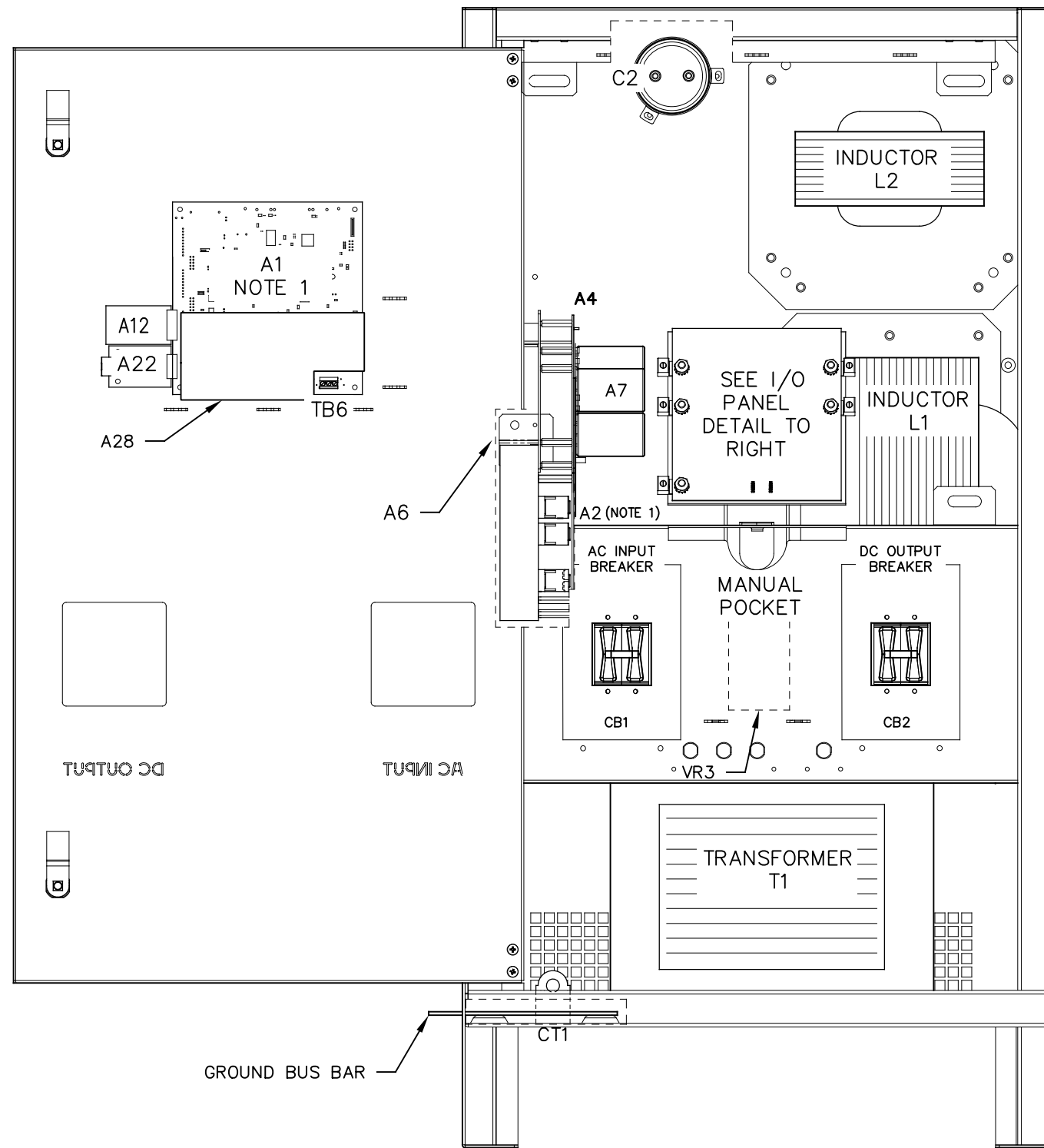
- ENCLOSURE IS A NEMA TYPE 1 / IP20 TOP-VENTED STEEL CABINET WITHOUT GASKETS. FINISH IS ANSI-61 GRAY EPOXY POWDERCOAT. MOUNTING BASE IS 12 GA. SIDE PANELS ARE 14 GA. TOP PANEL AND DOOR ARE 16 GA.
- ALLOW 6in / 152mm OF FREE AIR ON ALL VENTED SURFACES (TOP, SIDES & REAR) FOR COOLING.
- DATA NAMEPLATE DECAL (WITH CHARGER RATINGS) APPLIED TO DOOR.
- FOUR (4) 0.5in / 12mm FLOOR-MOUNTING HOLES AND FOUR (4) 1in x 0.625in / 25mm x 16mm FLOOR-MOUNTING SLOTS ARE PROVIDED ON BOTTOM OF ENCLOSURE AS SHOWN.
- FOUR (4) 1.31in / 33mm DIA STANDARD PRE-FAB KEY-SLOT KNOCKOUTS ARE PROVIDED AS SHOWN FOR 1in / 25mm CONDUIT ENTRY. IF ADDITIONAL CONDUIT ENTRANCES ARE REQUIRED, ENCLOSURE SHOULD BE FIELD-MODIFIED BY INSTALLER.
- BATTERY CHARGER SHIPPING WEIGHT: SEE PRODUCT LITERATURE.
- GROUND BUS BAR WITH 0.41 in / 10.41 mm DIA HOLE.



BOTTOM MOUNTING VIEW

DUAL DIMENSIONS in [mm]

REV. 1	DRN BY KJB	CHK BY MCR	APP BY MCR	DATE 12/1/2021	DRN BY KJB	DATE 10/29/2021	<p>HINDLEPOWER</p> <p>1075 Saint John Street Easton, PA 18042-6661 PH 610-330-9000 FAX 610-330-8510 www.hindlepowerinc.com</p>
DESCRIPTION STANDARD DRAWINGS.					CHK BY MCR	DATE 10/29/2021	
ECN NO. N/A					APP BY MCR	DATE 10/29/2021	
TITLE ATEVO BATTERY CHARGER OUTLINE: NEMA-1 STYLE-5070 ENCL 1Ø WITH COMMON OPTIONS 30-50ADC							<p>SCALE DWG No B NTS JE5309-23</p>
REV 1							SHEET 1 OF 1



TO BE PLACED NEAR BATTERY CELL

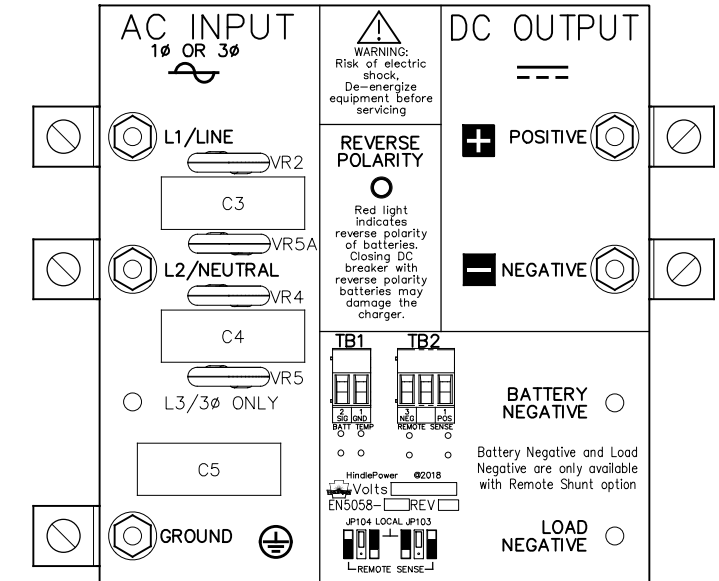
A10

25ft / 7.6m CABLE

SYM STANDARD COMPONENT DESCRIPTION	
A1	MAIN CONTROL PC BOARD
A2	POWER BOARD
A6	RECTIFIER ASSEMBLY
A9	MOV PC BOARD
A7	FILTER BOARD (C1x/R9x)
CB1	AC INPUT CIRCUIT BREAKER (CD2)
CB2	DC OUTPUT CIRCUIT BREAKER (CD2)
AUXCB2	DC CKT BKR (CB2) AUXILIARY CONTACTS
L1	MAIN INDUCTOR
L2	FILTER INDUCTOR
T1	POWER TRANSFORMER

SYM OPTIONAL COMP DESCRIPTION	
A4	AUXILIARY I/O BOARD
A10	TEMPERATURE COMPENSATION PROBE
A12	SERIAL COMMUNICATION ADAPTER
A22	ETHERNET ADAPTER
A28	METER MODULE PC BOARD
C2	BATTERY ELIMINATOR FILTER CAP
CT1	CURRENT TRANSFORMER
VR3	AC INPUT LIGHTNING ARRESTOR

ST-5070
INPUT-OUTPUT
TERMINAL
BOARD DETAIL



MOV PC BOARD
(A9)

I/O TERMINAL	DESCRIPTION - TYPE	CONNECTION
I/O (+/-)	POS/NEG OUTPUT TERMINALS - CU-ALUMINUM COMPRESSION LUG	#14-1/0 AWG
GND LUG	USER GROUND TERMINAL - CU-ALUMINUM COMPRESSION LUG	#14-1/0 AWG
I/O (L1/L2)	AC INPUT TERMINALS - CU-ALUMINUM COMPRESSION LUG	#14-1/0 AWG
GND BUS	COPPER GROUND BUS - 0.41 in / 10.41 mm DIA HOLE	0.38in RING LUG
(A2) TB1	POS/NEG REMOTE SENSE TERMS (A2) - SOLDERLESS COMP SCREW	#22-14 AWG
(A2) TB8	TEMPCO PROBE (A10) TERMINAL BLOCK - SOLDERLESS COMPRESSION SCREW	#22-14 AWG
(A4) TB4	AUX I/O RELAY CONTACTS (A4) - SOLDERLESS COMPRESSION SCREW	#22-14 AWG
(A1) TB6	SUMMARY ALARM TERMINAL BLOCK (A1) - SOLDERLESS COMPRESSION SCREW	#22-14 AWG

NOTES:
1. FOR DETAIL VIEWS OF ALL PC BOARDS (A1, A2, etc.) SEE DRAWING JE5313 - 23.

REV. 1	DRN BY KJB	CHK BY MCR	APP BY MCR	DATE 12/1/2021	DRN BY KJB	DATE: 10/29/2021
DESCRIPTION: STANDARD DRAWINGS.					CHK BY MCR	DATE: 10/29/2021
ECN NO. N/A					APP BY MCR	DATE: 10/29/2021

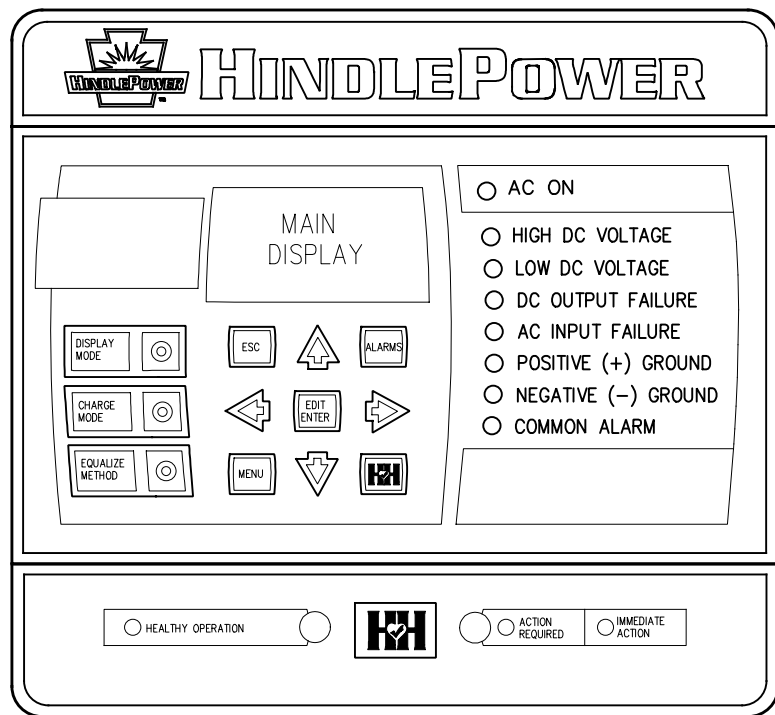
1075 Saint John Street
Easton, PA 18042-6661
PH 610-330-9000 FAX 610-330-8510
www.hindlepowerinc.com

HINDLEPOWER

TITLE: **ATEVO BATTERY CHARGER
INTERNAL COMPONENT LAYOUT: STYLE-5070
1Ø WITH COMMON OPTIONS 30-50ADC**

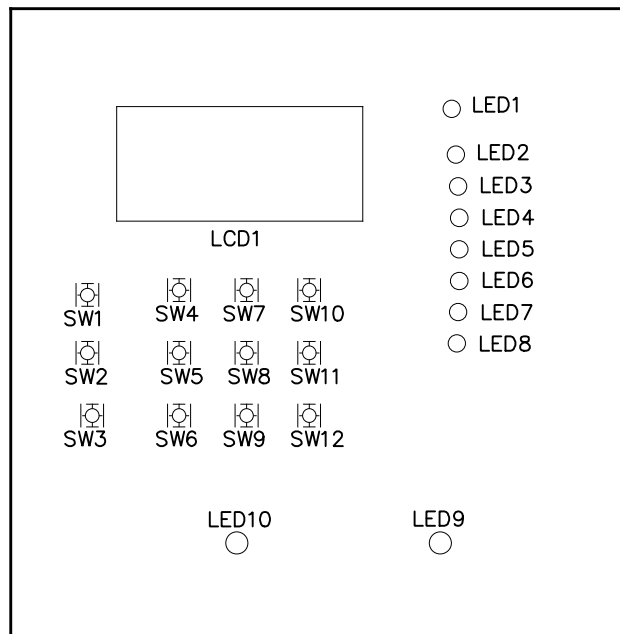
B SCALE: NTS DWG No: **JE5310-23**

REV 1 SHEET 1 OF 1

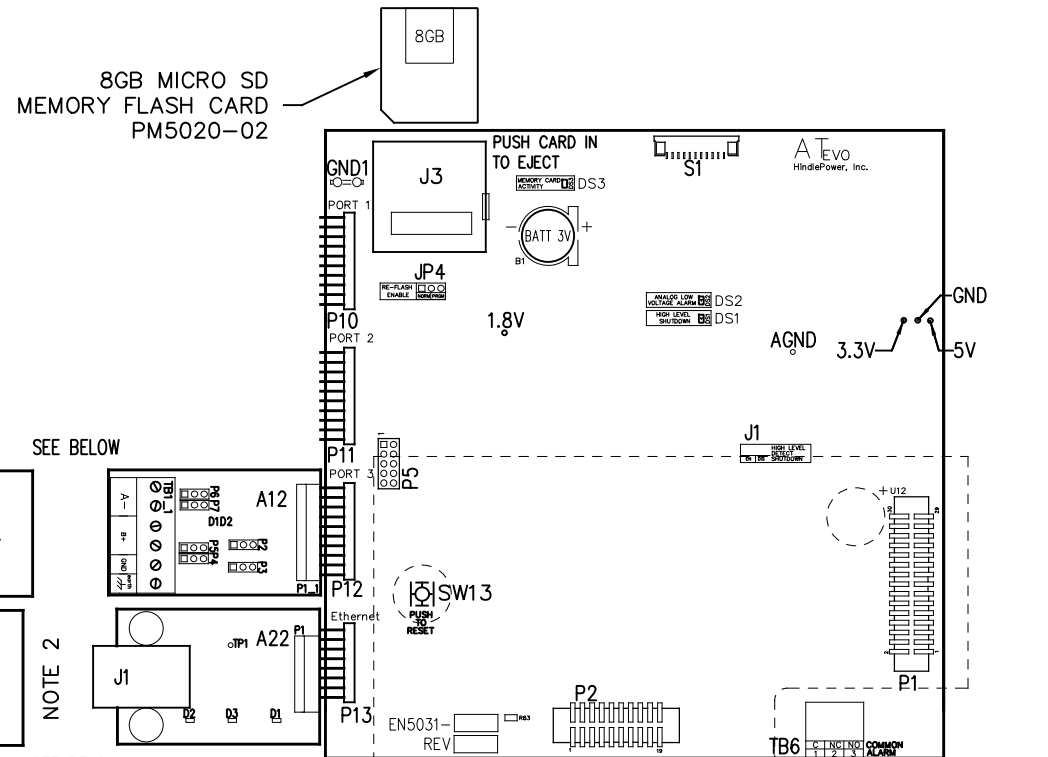


CONTROL PANEL
(PART No. FK5047-00)

NOTE: ALL ALARM CONTACTS ARE ENERGIZED WHEN IN THE NON-ALARM STATE (FAIL SAFE). ALL ALARM CONTACTS WILL CHANGE STATE WHEN CHARGER IS POWERED DOWN. CONTACT RATING IS 0.5A @ 125VAC/VDC RESISTIVE.

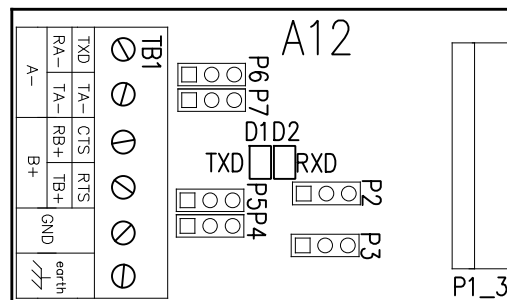


MAIN CONTROL PC BOARD (A1)
FRONT VIEW - FACING CHARGER DOOR WHEN INSTALLED



MAIN CONTROL PC BOARD (A1)
BACK VIEW - FACING CHARGER COMPONENTS WHEN INSTALLED

SERIAL COMMUNICATION ADAPTER (A12)



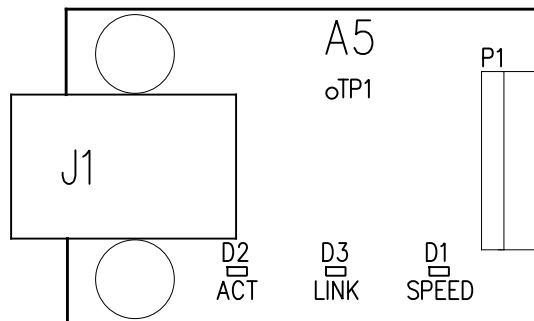
CONNECTORS (A12):
P1 - MAIN CONTROL BOARD

JUMPERS & CONFIGURATION SWITCHES (A12):
P2 - RECEIVER ENABLE CONTROL SELECTION
P3 - MEDIA CONTROL SELECTION (RS-234 OR RS-485)
P4 - RS-485 TERMINATION RESISTOR ENABLE (RECEIVE)
P5 - RS-485 TERMINATION RESISTOR ENABLE (TRANSMIT)
P6 - RS-485 INTERFACE 2 WIRE/4 WIRE SELECTION (A)
P7 - RS-485 INTERFACE 2 WIRE/4 WIRE SELECTION (B)

TERMINAL BLOCKS (A12):
TB1 - USER CONNECTIONS TO SERIAL INTERFACE

INDICATOR LIGHTS (A12):
TXD (D1) - SERIAL DATA BEING SENT
RXD (D2) - SERIAL DATA BEING RECEIVED

ETHERNET ADAPTER (A22)



2. SERIAL ADAPTER (A12) SUPPORTS MULTIPLE PROTOCOLS (DNP3 AND MODBUS) SIMULTANEOUSLY. SEE JA0102-54.

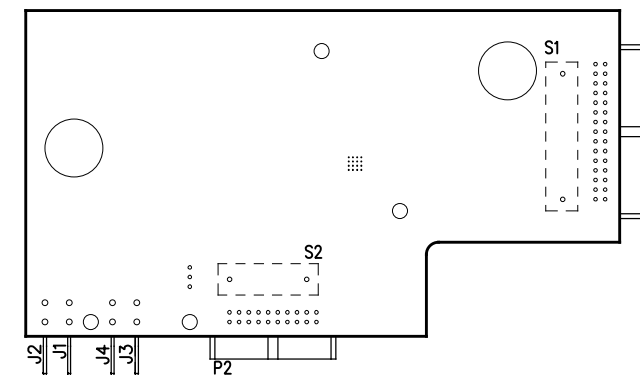
3. ETHERNET ADAPTER (A22) SUPPORTS MULTIPLE PROTOCOLS (DNP3 AND MODBUS) SIMULTANEOUSLY. SEE JA0102-54.

CONNECTORS (A5):
P1 - MAIN CONTROL BOARD
J1 - RJ-45 ETHERNET USER CONNECTION

INDICATOR LIGHTS (A5 LEDs):
D1 - ORANGE - ETHERNET SPEED INDICATION 10/100 MBPS
D2 - YELLOW - ETHERNET ACTIVITY (FLASHING)
D3 - RED - ETHERNET LINK

TEST POINTS (A5):
TP1 - CLOCK OUT

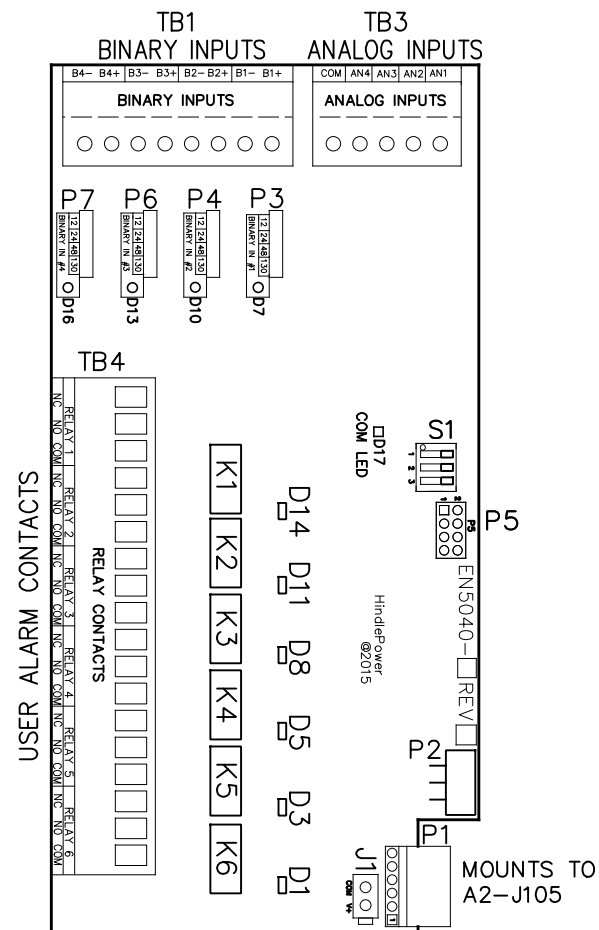
METER MODULE PC BOARD (A28)
MOUNTED ON MAIN CONTROL PC BOARD



MAIN CONTROL PC BOARD (A1)			
INDICATOR LIGHTS (LEDs): LED1 - GREEN - AC ON LED2 - RED - HIGH DC VOLTAGE ALARM LED3 - RED - LOW DC VOLTAGE ALARM LED4 - RED - DC OUTPUT FAILURE ALARM LED5 - RED - AC INPUT FAILURE ALARM LED6 - RED - POSITIVE (+) GROUND ALARM LED7 - RED - NEGATIVE (-) GROUND ALARM LED8 - RED - COMMON ALARM LED9 - RED - ACTION REQUIRED ALARM LED10 - GREEN - HEALTHY OPERATION DS1 - RED - HIGH LEVEL SHUTDOWN (HLD) DS2 - RED - ANALOG LOW VOLTAGE ALARM (LLD) DS3 - RED - MEMORY CARD ACTIVITY	JUMPERS: J1 - ANALOG HIGH VOLTAGE SHUTDOWN JUMPER J3 - SD CARD PORT JP4 - RE-FLASH (FIELD PROGRAMMING) JUMPER TERMINAL BLOCKS: TB6 - COMMON ALARM RELAY CONTACTS TEST POINTS: 1.8V - 1.8 VOLTS 3.3V - 3.3 VOLTS 5V - 5.0 VOLTS GND - GROUND AGND - ANALOG GROUND SDA - MAIN BOARD 12C DATA SCL - MAIN BOARD 12C CLOCK	SWITCHES: S1 - DISPLAY BUTTON S2 - CHARGE MODE BUTTON S3 - EQUALIZE METHOD BUTTON S4 - ESCAPE (ESC) BUTTON S5 - LEFT ARROW BUTTON S6 - MENU BUTTON S7 - UP ARROW BUTTON S8 - EDIT / ENTER BUTTON S9 - DOWN ARROW BUTTON S10 - ALARM BUTTON S11 - RIGHT ARROW BUTTON S12 - HINDLE HEALTH (HHS) BUTTON SW13 - SYSTEM RESET BUTTON (BACK OF BOARD)	CONNECTORS: P1 - POWER BOARD RIBBON P2 - 3 PHASE RECTIFIER RIBBON P3 - USB EXPANSION PORT P4 - SPI & I2C EXPANSION PORT #1 P5 - SPI & I2C EXPANSION PORT #2 P6 - DISPLAY SPI PORT P7 - DISPLAY JTAG PORTS P10 - SERIAL INTERFACE PORT #1 P11 - SERIAL INTERFACE PORT #2 P12 - SERIAL INTERFACE PORT #3 P13 - ETHERNET INTERFACE PORT P17 - GENERAL EXPANSION PORT

I/O TERMINAL	DESCRIPTION - TYPE	CONNECTION
(A1) TB6	SUMMARY ALARM TERMINAL BLOCK (A1) - SOLDERLESS COMP SCREW	#22-14 AWG
(A12) TB1	RS-232 / RS-485 USER CONNECTIONS - SOLDERLESS COMP SCREW	#22-14 AWG
(A22) J1	SERIAL ETHERNET CONNECTION - RJ45 PLUG	CAT5

REV. 1 DRN BY KJB CHK BY MCR APP BY MCR DATE 12/1/2021	DRN BY KJB DATE 10/29/2021 CHK BY MCR DATE 10/29/2021 APP BY MCR DATE 10/29/2021	<p>1075 Saint John Street Easton, PA 18042-6661 PH 610-330-9000 FAX 610-330-8510 www.hindlepowerinc.com</p>
DESCRIPTION: STANDARD DRAWINGS. ECN NO. N/A		<p>TITLE ATEVO BATTERY CHARGER CONTROL PANEL / PC BOARD DETAIL 1Ø WITH COMMON OPTIONS 30-50ADC</p>
		<p>SCALE B DWG No JE5313-23 REV 1 SHEET 1 OF 2</p>



AUXILIARY I/O BOARD (A4)

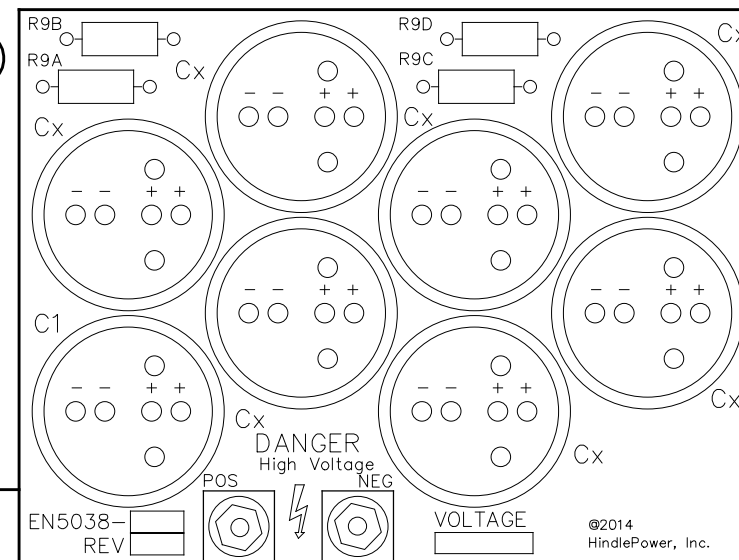
JUMPERS & CONFIGURATION SWITCHES FOR AUX I/O BOARD (A4)
 J1 - AUXILIARY POWER INPUT
 P1 - POWER BOARD (PRIMARY POWER & COMM SOURCE)
 P5 - PROGRAMMING HEADER

USER TERMINALS ON RELAY BOARD (A4):
 D1 - RED - RELAY #6 IN ALARM STATE
 D3 - RED - RELAY #5 IN ALARM STATE
 D5 - RED - RELAY #4 IN ALARM STATE
 D7 - YELLOW - BINARY INPUT #1 IS ABOVE THRESHOLD
 D8 - RED - RELAY #3 IN ALARM STATE
 D10 - YELLOW - BINARY INPUT #2 IS ABOVE THRESHOLD
 D11 - RED - RELAY #2 IN ALARM STATE
 D13 - YELLOW - BINARY INPUT #3 IS ABOVE THRESHOLD
 D14 - RED - RELAY #1 IN ALARM STATE
 D16 - YELLOW - BINARY INPUT #4 IS ABOVE THRESHOLD
 D17 - GREEN - COMMUNICATION TO MAIN BOARD (FLASHING)

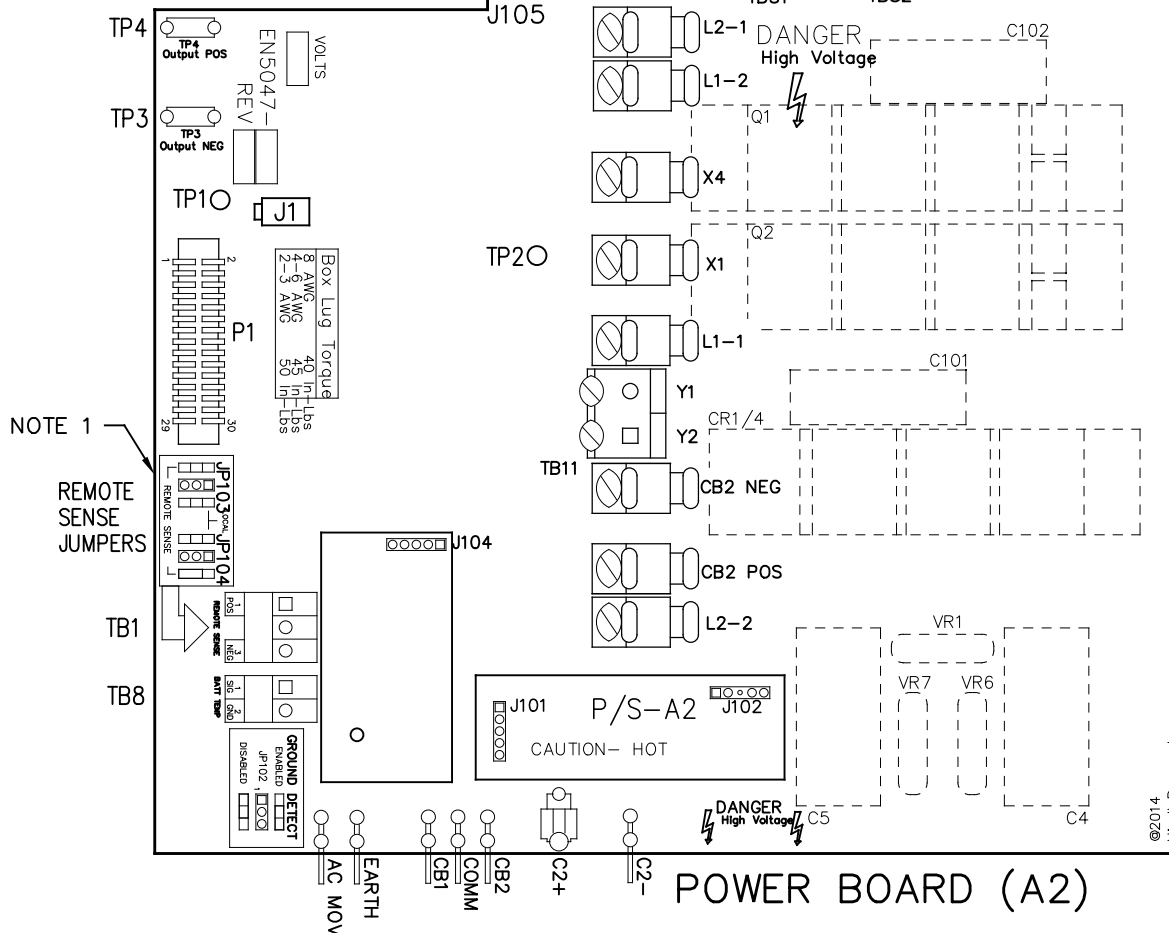
USER TERMINALS ON RELAY BOARD (A4):
 TB1 - BINARY INPUTS
 TB2 - SERIAL INTERFACE
 TB3 - ANALOG INPUTS
 TB4 - AUXILIARY I/O RELAY CONTACTS

JUMPERS & CONFIGURATION SWITCHES
 P3, 4, 6, 7 - BINARY INPUT VOLTAGE CONFIGURATION JUMPERS
 S1 - BOARD ADDRESS DIPSWITCH

FILTER BOARD (A7)



MOUNTS TO A4-P1



POWER BOARD (A2)

USER TERMINALS ON POWER BOARD (A2):

TB1 - REMOTE VOLTAGE SENSE
 TB8 - BATTERY TEMPERATURE COMPENSATION
 TB11 - 'Y' CONTROL WINDINGS

JUMPERS ON POWER BOARD (A2):

JP102 - GROUND DETECT CIRCUIT ENABLE / DISABLE
 JP103 - REMOTE OR LOCAL SENSE SELECTOR (+)
 JP104 - REMOTE OR LOCAL SENSE SELECTOR (-)

CONNECTORS ON POWER BOARD (A2):

J1 - POWER OUT
 J101 - DC POWER SUPPLY
 J102 - DC POWER SUPPLY
 J105 - AUXILIARY I/O BOARD
 P1 - MAIN CONTROL BOARD RIBBON

DISCRETE TERMINALS:

AC MOV - CHASSIS EARTH GROUND
 EARTH - CHASSIS EARTH GROUND (DOOR)
 CB1 - AC BREAKER AUX SWITCH CONTACT
 CB2 - DC BREAKER AUX SWITCH CONTACT
 CB2 POS - DCBREAKER POSITIVE
 CB2 NEG - DC BREAKER NEGATIVE
 COMM - BREAKER AUX SWITCH COMMON
 C2+ - ELIMINATOR FILTER CAPACITOR (+)
 C2 - ELIMINATOR FILTER CAPACITOR (-)
 X1 - TRANSFORMER SECONDARY WINDING
 X4 - TRANSFORMER SECONDARY WINDING
 L1-1 - FILTER INDUCTOR #1 (TERMINAL #1)
 L1-2 - FILTER INDUCTOR #1 (TERMINAL #2)
 L2-1 - FILTER INDUCTOR #2 (TERMINAL #1)
 L2-2 - FILTER INDUCTOR #2 (TERMINAL #2)
 TBS1 - FILTER CAPACITOR BOARD (+)
 TBS2 - FILTER CAPACITOR BOARD (-)

TEST POINTS ON POWER BOARD (A2):

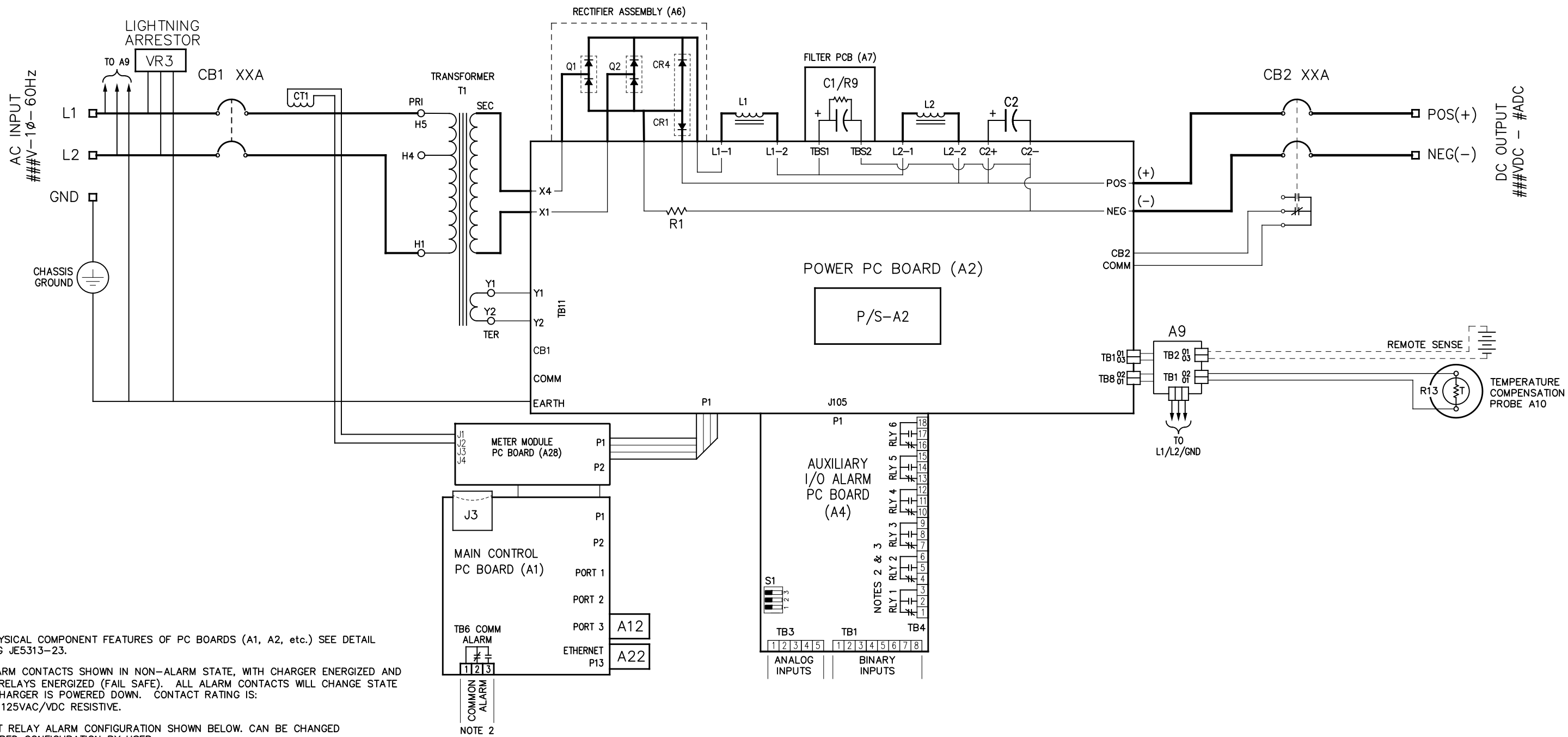
TP1 - PRE-FILTERED DC BUS (-)
 TP2 - PRE-FILTERED DC BUS (+)
 TP3 - DC BUS (-)
 TP4 - DC BUS (+)

NOTE:

1. REMOTE SENSE JUMPERS (JP103, JP104) MUST BE IN REMOTE SENSE POSITION IN STYLE-5070 ENCLOSURE.

I/O TERMINAL	DESCRIPTION - TYPE	CONNECTION
(A2) TB1	POS/NEG REMOTE SENSE TERMS (A2) - SOLDERLESS COMP SCREW	#22-14 AWG
(A2) TB8	TEMPCO PROBE (A10) TERM BLK - SOLDERLESS COMP SCREW	#22-14 AWG
(A4) TB1	AUX I/O BINARY INPUTS (A4) - SOLDERLESS COMP SCREW	#22-14 AWG
(A4) TB2	AUX I/O RELAY CONTACTS (A4) - SOLDERLESS COMP SCREW	#22-14 AWG
(A4) TB3	AUX I/O ANALOG INPUTS (A4) - SOLDERLESS COMP SCREW	#22-14 AWG
(A4) TB4	AUX I/O RELAY CONTACTS (A4) - SOLDERLESS COMP SCREW	#22-14 AWG

REV. DRN BY 1 KJB	CHK BY MCR	APP BY MCR	DATE 12/1/2021	DRN BY KJB	DATE 10/29/2021		1075 Saint John Street Easton, PA 18042-6661 PH 610-330-9000 FAX 610-330-8510 www.hindlepowerinc.com
DESCRIPTION STANDARD DRAWINGS.				CHK BY MCR	DATE 10/29/2021		
ECN NO. N/A				APP BY MCR	DATE 10/29/2021	SCALE DWG No B NTS JE5313-23	
						REV 1	SHEET 2 OF 2



NOTES:

- FOR PHYSICAL COMPONENT FEATURES OF PC BOARDS (A1, A2, etc.) SEE DETAIL DRAWING JE5313-23.
- ALL ALARM CONTACTS SHOWN IN NON-ALARM STATE, WITH CHARGER ENERGIZED AND ALARM RELAYS ENERGIZED (FAIL SAFE). ALL ALARM CONTACTS WILL CHANGE STATE WHEN CHARGER IS POWERED DOWN. CONTACT RATING IS: 0.5A @ 125VAC/VDC RESISTIVE.
- DEFAULT RELAY ALARM CONFIGURATION SHOWN BELOW. CAN BE CHANGED TO DESIRED CONFIGURATION BY USER.

A4	DESCRIPTION	LATCHING	DELAY
RELAY #1	HIGH VOLTAGE DC	DISABLED	30 SECONDS
RELAY #2	LOW VOLTAGE DC	DISABLED	30 SECONDS
RELAY #3	DC OUTPUT FAILURE	DISABLED	30 SECONDS
RELAY #4	LOW AC SUPPLY	DISABLED	30 SECONDS
RELAY #5	POSITIVE GROUND FAULT	DISABLED	30 SECONDS
RELAY #6	NEGATIVE GROUND FAULT	DISABLED	30 SECONDS

REV. 1	DRN BY KJB	CHK BY MCR	APP BY MCR	DATE 12/1/2021	DRN BY KJB	DATE: 10/29/2021
DESCRIPTION				STANDARD DRAWINGS.	CHK BY MCR	DATE: 10/29/2021
ECN NO. N/A				APP BY MCR	DATE: 10/29/2021	

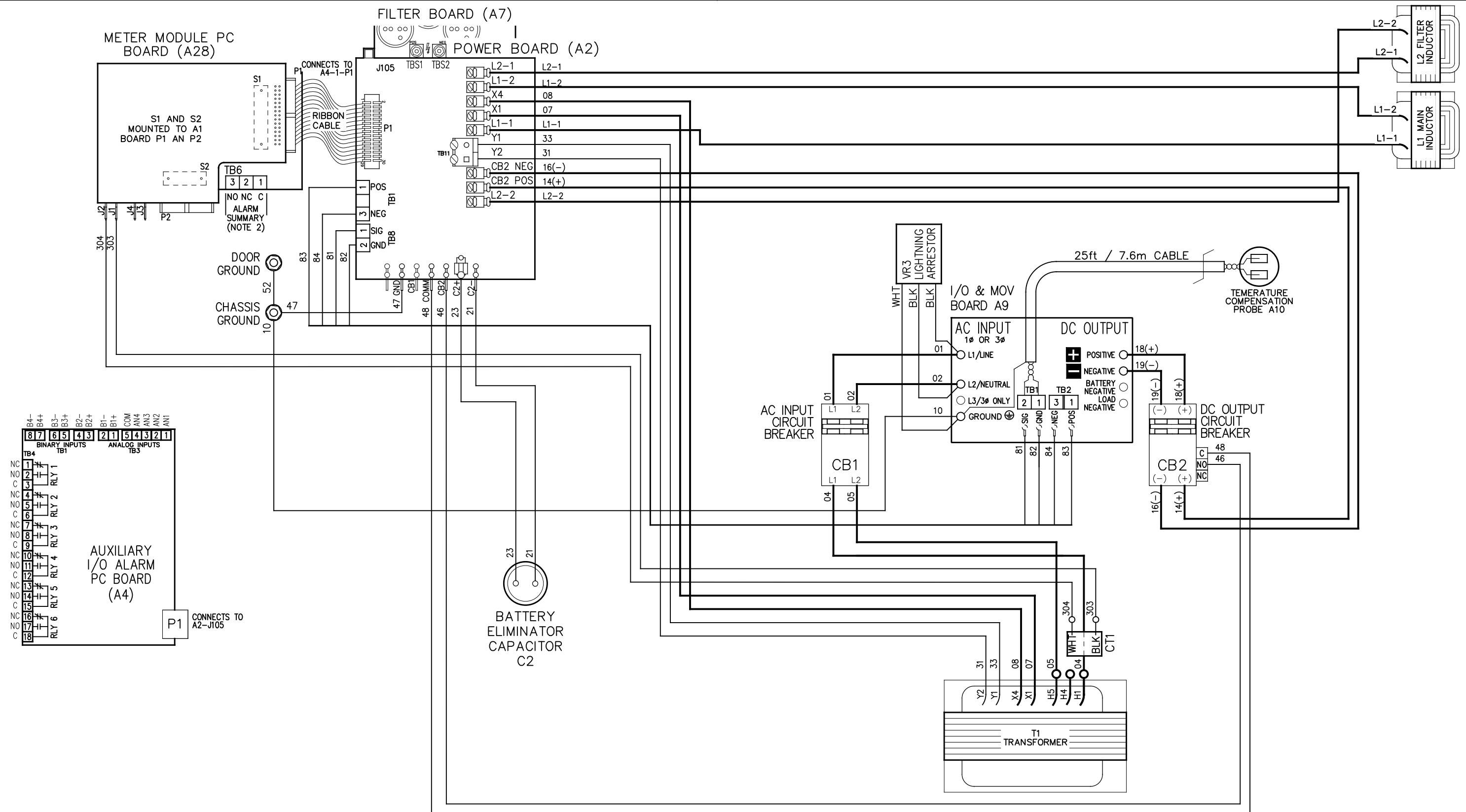
1075 Saint John Street
Easton, PA 18042-6661
PH 610-330-9000 FAX 610-330-8510
www.hindlepowerinc.com

HINDLEPOWER

TITLE
**ATEVO BATTERY CHARGER
SCHEMATIC: STYLE 5070
1Ø WITH COMMON OPTIONS 30-50ADC**

B SCALE DWG No
NTS JE5311-23

REV 1 SHEET 1 OF 1



- NOTES:
1. WHEN NATURAL LEADS OF MAGNETICS ARE NOT USED, CHARGER COMPONENTS ARE CONNECTED WITH BLACK FLAME-RETARDANT SWITCHBOARD INSULATION SYSTEM (SIS) TYPE WIRING, IDENTIFIED ON EACH END WITH NUMBER-CODED MARKERS. GROUND WIRES ARE GREEN WITH YELLOW STRIPE.
 2. STANDARD USER ALARM CONTACTS (TB6 [A1], TB1[A2], TB8[A2], etc.) ARE SOLDERLESS COMPRESSION SCREW TERMINALS, ACCEPTING #22-14 AWG WIRE.

REV. 1	DRN BY KJB	CHK BY MCR	APP BY MCR	DATE 12/1/2021	DRN BY KJB	DATE: 10/29/2021	<p>HINDLEPOWER</p>	1075 Saint John Street Easton, PA 18042-6661 PH 610-330-9000 FAX 610-330-8510 www.hindlepowerinc.com	
DESCRIPTION STANDARD DRAWINGS.					CHK BY MCR	DATE: 10/29/2021			TITLE ATEVO BATTERY CHARGER CONNECTION DIAGRAM: STYLE 5070 1Ø WITH COMMON OPTIONS 30-50ADC
ECN NO. N/A					APP BY MCR	DATE: 10/29/2021			
					B SCALE NTS	DWG No JE5312-23	REV 1 SHEET 1 OF 1		