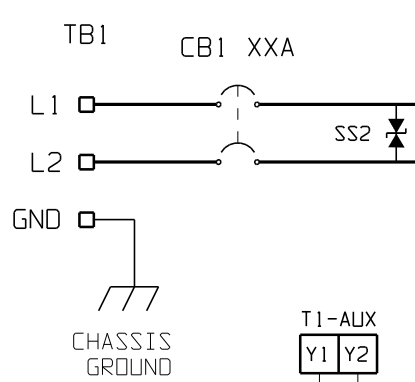
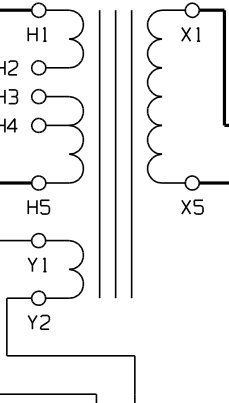


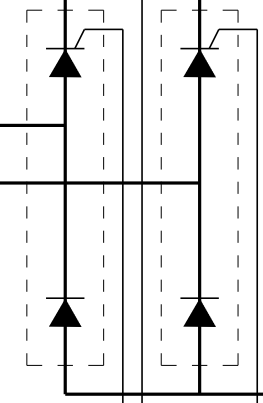
AC INPUT  
XXXV-1 $\phi$ -60Hz  
XX.X kVA



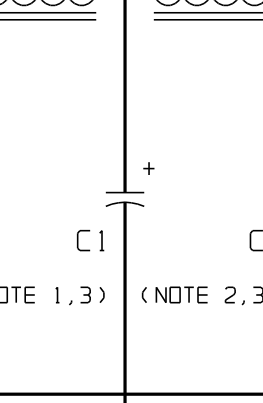
TRANSFORMER  
T1



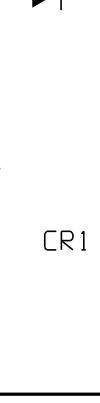
SCR1 SCR2



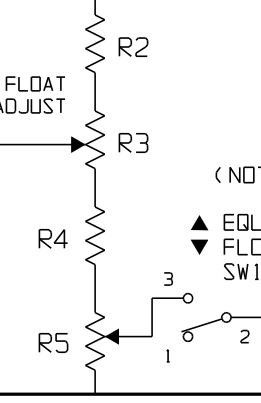
L1 L2



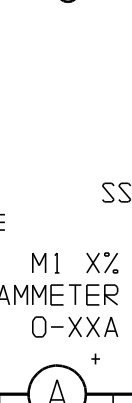
CR2



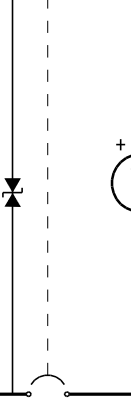
R2 R3 R4 R5



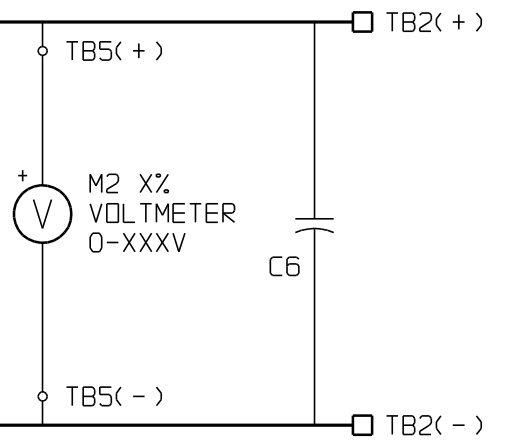
F1 XXA



CB2 XXA



DC OUTPUT  
XXXVDC-XXADC

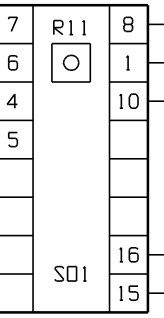


T1-AUX  
Y1 Y2  
(NOTE 8)



SYSTEM COMMON

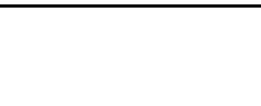
CURRENT LIMIT ADJUST



CTRL MODULE PC BOARD A1

FEEDBACK  
CURRENT LIMIT  
CTRL CIRCUIT REF

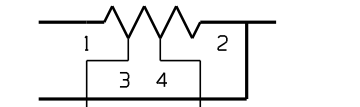
EQUALIZE ADJUST



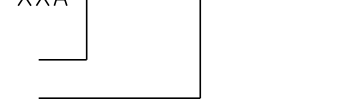
M1 X%  
AMMETER  
0-XXA



SHUNT  
SH1 + (NOTE 4)



M1 X%  
AMMETER  
0-XXA



SYM.	DESCRIPTION
A1	MAIN CONTROL PC BOARD
C1	FILTER CAPACITOR (OPTIONAL)
C2	BATTERY ELIMINATOR CAP (OPT)
C3	SNUBBER CAPACITOR
C6	DC OUTPUT EMI FILTER CAP
CB1	AC INPUT CIRCUIT BREAKER
CB2	DC OUTPUT CIRCUIT BKR (OPT)
CR1	POLARITY DIODE
CR2	BLOCKING DIODE
DSO1	AC ON INDICATOR LIGHT
F1	MAIN DC FUSE
F2	REDUNDANT DC FUSE (NOT SHOWN)
L1	MAIN INDUCTOR
L2	FILTER INDUCTOR (OPTIONAL)
M1	DC OUTPUT AMMETER
M2	DC OUTPUT VOLTMETER
R1	BLEED RESISTOR
R2	VOLTAGE DIVIDER (TOP)
R3	FLOAT POTENTIOMETER
R4	VOLTAGE DIVIDER (LOWER)
R5	EQUALIZE POTENTIOMETER
R11	CURRENT LIMIT ADJUST POT
SCR1-2	SILICON-CONTROLLED RECTIFIERS
SH1	MAIN DC SHUNT
SO1	CTRL PCB (A1) INTERCONNECTOR
SS1	DC OUTPUT SURGE PROTECTOR
SS2	AC INPUT SURGE PROTECTOR
SW1	FLOAT/EQUALIZE SWITCH (OPT)
T1	POWER ISOLATION TRANSFORMER
TB1	AC INPUT TERMINAL BLOCK
TB2	DC OUTPUT TERMINAL BLOCK
TB5	DC SIGNAL TERMINAL BLOCK

- NOTES:
- 1) L2 AND C1 ARE USED FOR FILTERING OF DC OUTPUT (SCRF TYPE).
  - 2) C2 IS USED FOR BATTERY ELIMINATOR OF DC OUTPUT (SCRF-E TYPE).
  - 3) C1 AND C2 MAY CONSIST OF ONE OR MORE INDIVIDUAL CAPACITORS.
  - 4) EXTERNAL SHUNT (SH1) IS SUPPLIED IN CHARGERS RATED 50ADC NOMINAL OUTPUT OR GREATER (M1 CONNECTED IN PARALLEL).
  - 5) OPTIONAL DC CIRCUIT BREAKER (CB2) IS SHOWN. IF CB2 IS NOT SUPPLIED, A SECOND DC FUSE (F2) IS SUPPLIED IN THE NEGATIVE OUTPUT LEAD.
  - 6) STANDARD F/E SWITCH SHOWN, OTHER EQUALIZE FEATURES AVAILABLE.
  - 7) TB5 IS USED AS AN INTERNAL CONNECTION POINT FOR BATTERY POSITIVE AND NEGATIVE SIGNAL WIRING ONLY.
  - 8) SPECIAL SIGNAL WIRING SUPPLIED WITH UNITS IN STYLE-3 ENCLOSURES.
  - 9) IN SCRF-E TYPE UNITS LESS THAN 50Adc, C1/C2 (-) CONNECTIONS ARE MADE AT SYSTEM COMMON.

				THIRD ANGLE PROJECTION		 1075 Saint John Street Easton, PA 18042-6661 PH 610-330-9000 FAX 610-330-8510 www.hindlepowerinc.com	
				DRAWN BY	MCR	091803	
				APPROVED		091803	
1	20373	101206		TITLE SCR/SCRF SERIES BATTERY CHARGER: MAINFRAME SCHEMATIC - SINGLE PHASE INPUT			
0	E1384	091803		DRAWING No		JE5076-00	REV 1
UNLESS OTHERWISE NOTED DIMENSIONS ARE IN INCHES. TOLERANCES ARE:				SCALE		NTS	PART No
REV	ECN No	DATE	APP	JE5076-00		SHEET	1 OF 1