

AT-DC SERIES

COMPLEMENTARY DC DISTRIBUTION CENTER



Combine a standard utility battery charger with a dc distribution breaker panel, made specific for your application.

Charger and distribution panel are factory-wired and assembled as one unit, ready for installation.

Very clean and simple

- Compatible with any AT Series battery charger, mounted directly to charger enclosure
- Stand-alone dc distribution assembly is also floor, wall or rack mountable
- Figure shows rack-mounted Style-5017 AT10.1 charger (top) and Style-5035 AT-DC panel (bottom)



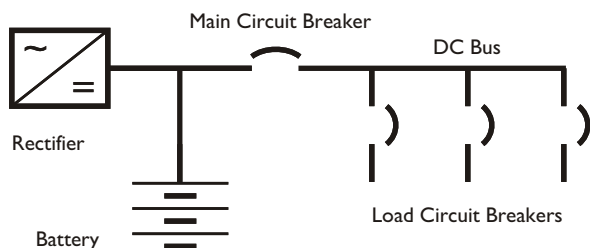
HINDLEPOWER

HindlePower's AT-DC Distribution Center is a clean and simple solution for your DC distribution

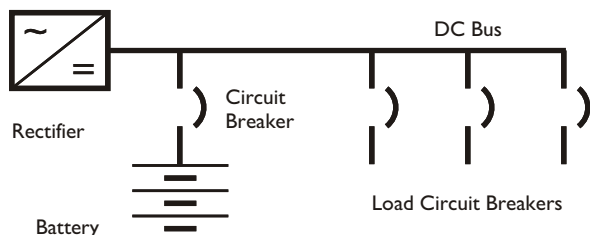
GENERAL INFORMATION

1. Charger/AT-DC system is factory-wired and fully assembled.
2. Circuit breakers rated for 10 kAIC at 125Vdc.
High interrupting capacity breakers are available for special requirements.
3. Main circuit breaker and all branch circuit breakers are 2-pole, series trip.
4. Engraved functional nameplates provided for all circuit breakers.
5. Circuit breaker schedule provided to identify function and rating(s).
6. AT-DC panel Style-5035 enclosure is a NEMA-1 / IP20 type cabinet, constructed with 14 GA steel, powder coated with ANSI-61 gray epoxy paint.
7. Optional copper ground bus w/CU-AL compression lug available.
8. Standard configuration is one (1) main circuit breaker (100A or 200A trip rating), and up to fourteen (14) distribution circuit breakers (15A to 50A max). Other configurations available on special order.
9. Order battery charger separately, and batteries are...not included.

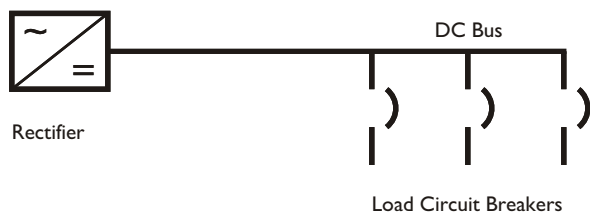
CONFIGURATION A: Main Load Circuit Breaker



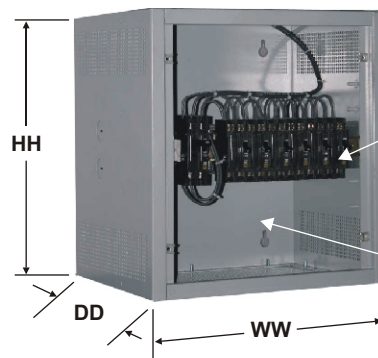
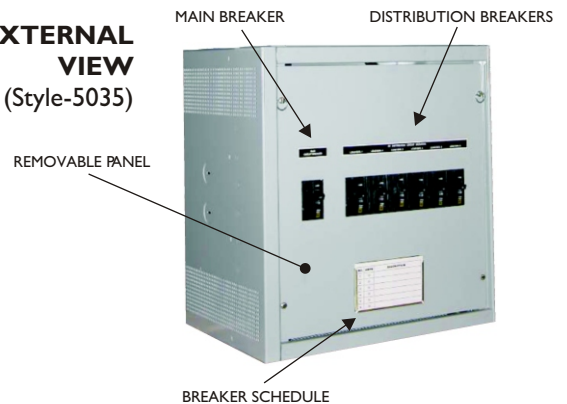
CONFIGURATION B: Battery Circuit Breaker



CONFIGURATION C: No Main Circuit Breaker



EXTERNAL VIEW (Style-5035)



INTERNAL VIEW

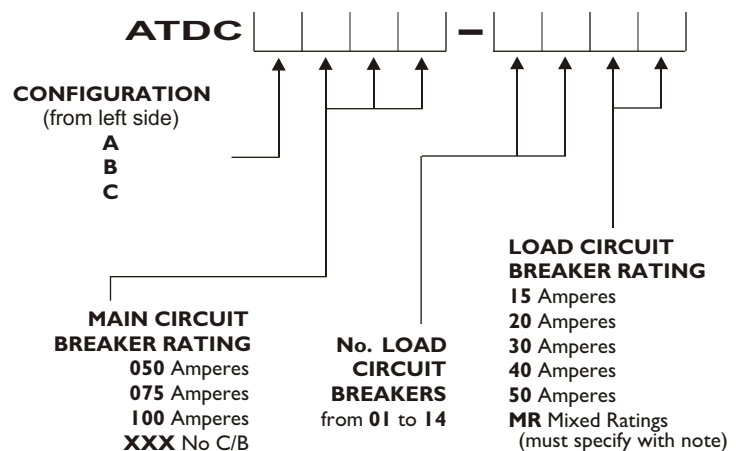
DIN rail mounted circuit breakers for easy replacement

Customer wires directly into load side of respective circuit breaker with ample room for wire runs and wire markings

AT-DC Style-5035 ENCLOSURE DIMENSIONS		
WIDTH (in/mm)	HEIGHT (in/mm)	DEPTH (in/mm)
17.50 445	18.50 470	12.50 318

<http://www.atseries.net/PDFs/JE5161-00.pdf>

ORDERING INFORMATION



Specifications are subject to change without notice.

